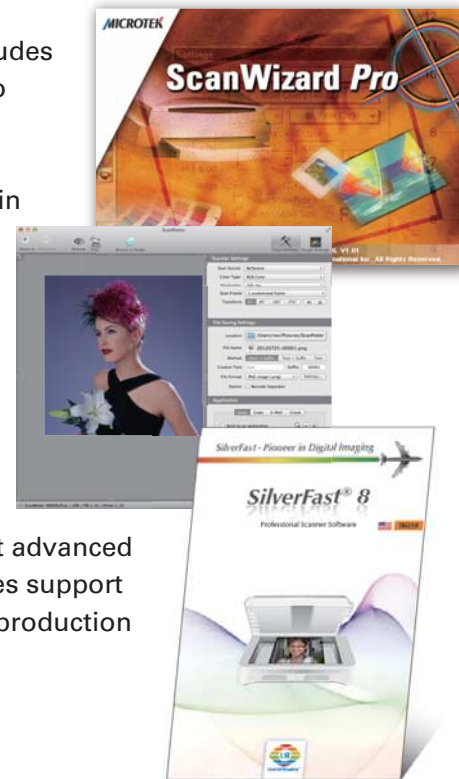


## Powerful Scanning Software

ScanMaker 9800XL Plus offers you a variety of choices on scanning software. You may pick up either one from these choices to finish your scans based on your needs.

### • Microtek ScanWizard Pro (PC)

This is an advanced scanner controller program that provides many powerful, professional-level features for scanning. ScanWizard Pro includes the Microtek Scanner ICC Profiler (MSP) program, which allows users to calibrate the scanner and generate the appropriate ICC color profile to ensure color consistency and accuracy during the scanning process. ScanWizard Pro also features two color spaces, allowing users to work in the Native CMYK / RGB mode, as well as in the intuitive LCH (Lightness, Chroma, Hue) mode.



### • Microtek ScanPotter (Mac)

The ScanPotter is developed exclusively for Microtek scanners running on a Mac system. Its single-page and overall control panel provides users a simple and straightforward control over the scanning process.

### • LaserSoft SilverFast AI Studio (PC/Mac)

The SilverFast AI Studio is a leading scanning software, which can meet advanced and sophisticated needs for scanned images. Its professional capabilities support precise and refined color correction and image adjustment to critical reproduction requirements in an efficient and productive workflow.



SilverFast® Ai Studio

## Specifications

### Scanner Type

Desktop color flatbed scanner

### Image Sensor

CCD

### Light Source

Tri-wavelength LED

### Resolution

Optical: 1600 x 3200 dpi

### Optical Density

3.7 Dmax

### Scanning Modes

48-bit color, 16-bit grayscale, 1-bit b&w

### Scanning Area

Reflective: 12" x 16.9" / 304.8 x 429.26 mm

Transparency: 12" x 16" / 304.8 x 406.4 mm

### Connectivity

Hi-Speed USB (USB 2.0)

### Dimensions (LxWxH)

24.7" x 14.8" x 5.1" / 627.5 x 375.9 x 129.5 mm

24.7" x 14.8" x 7.1" / 627.5 x 375.9 x 180.5 mm (w/ TMA)

### Weight

26.4 lbs. / 12 kg

35.4 lbs. / 16.1 kg (w/ TMA)

### Environment

Operating Temperature:

50°F to 104°F / 10°C to 40°C

Relative humidity: 20% to 85%

## System Requirements

### • CD/DVD-ROM drive (for installing software)

• Color display with 24-bit color output capability

• 512 MB RAM or more

• Pentium IV PC or higher with USB 2.0 port;

Intel-based Mac computer with built-in USB port

• Windows 7 / 8 / 10 ;

Mac OS X 10.10 or later

## Included Software

• Microtek® ScanWizard™ Pro (PC)

• Microtek® Scanner ICC Profiler (PC)

• Microtek® LAN Wizard (PC)

• Microtek® ScanPotter (Mac)

• Adobe® Acrobat® Reader (PC)

• ABBYY FineReader® Sprint OCR (PC/Mac)

• LaserSoft® SilverFast® Ai Studio (PC/Mac)\*

\* The scanning software you received depends on the configuration of the scanner you purchased.

For more details on product, please contact your local Microtek sales or dealers.

## ScanMaker 9800XL Plus

# Professional A3 Graphic Scanner

Tri-wavelength LED light source without warm-up time



## MICROTEK INTERNATIONAL, INC.

No.6, Industry East Road 3, Hsinchu Science Park, Hsinchu 30075, Taiwan  
Tel: +886-3-577-2155 Fax: +886-3-577-2598 www.microtek.com

© 2021 Microtek. Microtek, ScanMaker, ArtixScan and ScanWizard are trademarks or registered trademarks of Microtek International, Inc. All other brands, product names and logos herein are trademarks or registered trademarks of their respective holders. Specifications, software bundles and accessories are subject to change without notice. Delivery of technical support services subject to change without notice. Not responsible for typographical errors. © 2012 Ingram Publishing. 20210131



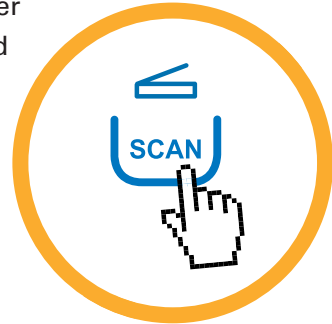


# ScanMaker 9800XL Plus



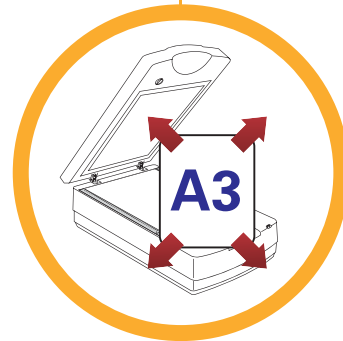
## Flatbed scanner with an extra-large A3 scan bed and an intuitive Smart-touch button

The tabloid-size scan bed of the ScanMaker 9800XL Plus lets you easily scan oversized originals, contact sheets, large pieces of art, mechanical blueprints, and X-rays.



Smart-touch Button

A3 Scan Bed



Plus, one Smart-touch button (SCAN) located at the front of the scanner provides you with a quick and easy access way to capture images that can be automatically saved as files or sent to another application for further processing later.

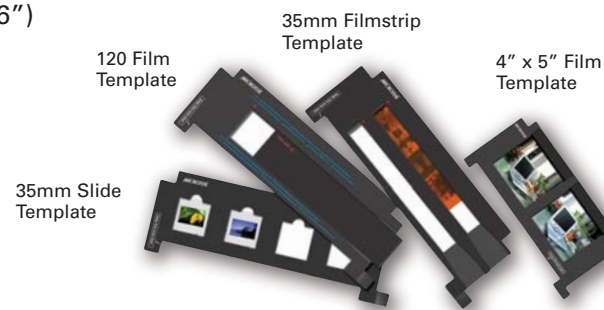


## Transparent Media Adapter (TMA) support - Ideal for scanning different sizes of film

The ScanMaker 9800XL Plus contains a larger-format (12" x 16") TMA (Transparent Media Adapter) that allows you to scan various transparent films easily. Used together with specially designed film templates, it is simple to accommodate a variety of film sizes, such as 35mm mounted slides, 35mm filmstrips, 4" x 5" film, and medium format film from 6 x 4.5-cm up to 6 x 17-cm panoramic film.



Transparent Media Adapter

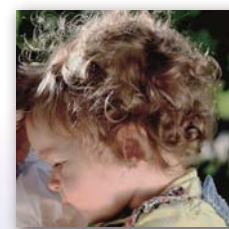


## Superior 1600 x 3200 dpi optical resolution, 48-bit color depth and 3.7 Dmax

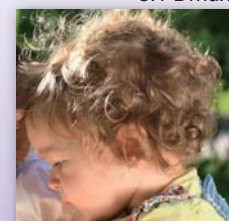
The ScanMaker 9800XL Plus has a CCD with resolution that reaches up to 1600 x 3200 pixels per inch. With the built-in 48-bit ADC (Analog to Digital Converter), the ScanMaker 9800XL Plus can convert originals to digital data with high fidelity format. It is capable of delivering full 48-bit depth color for richer and smoother tonal values; also, an optical range of 3.7 Dmax allows users to capture details in highlight and shadow areas, as well as accurately represents gradation and natural color from originals without sacrificing details of the image.



Original Image



3.1 Dmax



3.7 Dmax

## Multiple Sampling Capability

The ScanMaker 9800XL Plus can carry out multiple sampling, in user-selectable frequencies of 2, 4, 8, and 16 steps. Multiple sampling reduces random image noise and minimizes signal fluctuation, yielding purer image output that greatly enhances the optical density range.



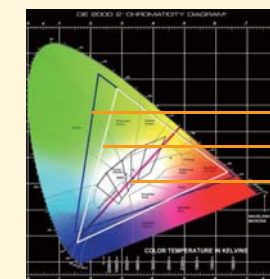
Before



After

## Tri-wavelength LEDs enhance color richness and achieve maximum cost efficiency

Adopting tri-wavelength LEDs as its light source, ScanMaker 9800XL Plus is able to present color gamut in wider ranges and to boost the productivity and to reduce energy costs amazingly. Color gamut enclosed by a tri-wavelength LED is closer to that by a NTSC, which presents delicate and brilliant color, making the after-scanned images as true as the real projects.

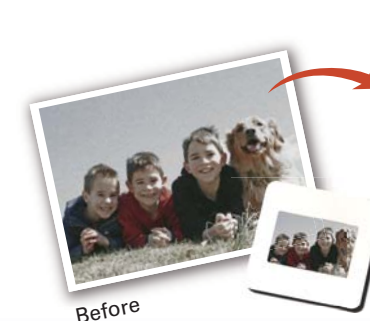


NTSC  
Tri-wavelength LED  
Dual-wavelength LED

Therefore, it can capture richer and deeper color than what a two-wavelength LED can do. Furthermore, LEDs require no warm-up time before carrying out the scan, which prevents the waste of time and conserves money of energy. The best of all, with the stable performance generated by a scanner with LEDs as its light source, the image quality will remain consistent even after used for a certain period of time.

## Microtek's exclusive ColoRescue™ restores faded color

Microtek's ColoRescue™ is a color restoration solution, which can restore faded colors in both photos and film, bringing hues back to their original luster and brilliance for vibrant images. ColoRescue's one-click, automatic color recovery process is simple and straightforward, involving no learning curve or hassle.



Before



After

## Network Scanning Support

Microtek's ScanWizard Pro implements a network scanning feature (Windows only) that allows the scanner to be shared among clients and servers in a local area network (LAN). This utility makes it easy to share a scanner within an office.

