



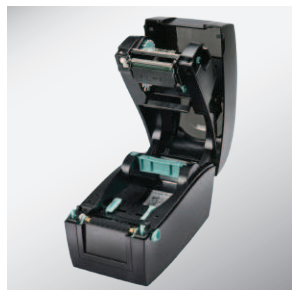
# Desktop Printers RT200i / RT230i

## Mini Barcode Printer with Industrial Performance

The RT200i barcode printer is packed with performance enhancing features that makes it the most powerful 2" thermal transfer printer



Color TFT LCD and operation panel for easy and intuitive operation



Modern clam-shell design makes it simple to load labels



Ethernet, USB 2.0, Serial and USB host are standard features adding flexibility and power



Innovative "C" button makes label Calibration simple and fast



# RT200i / RT230i

## Desktop Printer

Barcodes Made Easy

Model		RT200i	RT230i
Print Method		Thermal Transfer / Direct Thermal	
Resolution		203 dpi (8 dots/mm)	300 dpi (12 dots/mm)
Print Speed		7 IPS (177 mm/s)	5 IPS (127 mm/s)
Print Width		2.12" (54 mm)	2.24" (56.9 mm)
Print Length		Min. 0.16" (4 mm)**; Max. 68" (1727 mm)	Min. 0.16" (4 mm)**; Max. 30" (762 mm)
Processor		32 bit RISC CPU	
Memory	Flash	8 MB Flash (4 MB for user storage)	
	SDRAM	16 MB SDRAM	
Sensor Type		Adjustable reflective sensor (full range) Fixed transmissive sensor, central aligned	
Media	Types	Continuous form, gap labels, black mark sensing and punched hole; label length set by auto sensing or programming	
	Width	Min. 0.6" (15 mm) – Max. 2.36" (60 mm)	
	Thickness	Min. 0.003" (0.076 mm) – Max. 0.008" (0.20 mm)	
	Label Roll Diameter	Max. 5" (127 mm)	
Ribbon	Core Diameter	1" (25.4 mm), 1.5" (38.1 mm)	
	Types	Wax, wax / resin, resin	
	Length	360' (110 m)	
	Width	Min. 2.20" (56 mm) – Max. 2.32" (59 mm)	
Printer Language	Ribbon Roll Diameter	Max. 1.5" (38 mm)	
	Core Diameter	0.5" (12.7 mm)	
	Label Design Software	GoLabel (for EZPL only)	
	Driver	Windows 2000, XP, Vista, Windows 7, 8.1 and 10, Windows Server 2003 & 2008 & 2012, MAC, Linux	
Software	DLL	Win CE, .NET, Andriod, Windows Mobile, Windows 2000 / XP / VISTA / Windows 7 / Windows 8.1/Windows 10	
	Resident Fonts	6, 8, 10, 12, 14, 18, 24, 30, 16X26 and OCR A&B Bitmap fonts 90°, 180°, 270° rotatable, single characters 90°, 180°, 270° rotatable Bitmap fonts 8 times expandable in horizontal and vertical directions	
Download Fonts	TTF Fonts	TTF Fonts (Bold / Italic / Underline ). 0°,90°, 180°, 270° rotatable	
	Bitmap Fonts	Bitmap fonts 90°, 180°, 270° rotatable, single characters 90°, 180°, 270° rotatable	
	Asian Fonts	16x16, 24x24. Traditional Chinese (BIG-5), Simplified Chinese(GB2312), Japanese (S-JIS), Korean (KS-X1001) 90°, 180°, 270° rotatable and 8 times expandable in horizontal and vertical directions	
Barcodes	TTF Fonts	90°, 180°, 270° rotatable	
	1-D Bar codes	China Postal Code, Codabar, Code 11, Code 32, Code 39, Code 93, Code 128 (subset A, B, C), EAN-8, EAN-13, EAN 8/13 (with 2 & 5 digits extension), EAN 128, FIM, German Post Code, GS1 DataBar, HIBC, Industrial 2 of 5, Interleaved 2-of-5 (I 2 of 5), Interleaved 2- of-5 with Shipping Bearer Bars, ISBT – 128, ITF 14, Japanese Postnet, Logmars, MSI, Postnet, Plessey, Planet 11 & 13 digit, RPS 128, Random Weight, Standard 2 of 5, Telepen, UPC-A, UPC-E, UPC-A and UPC-E with EAN 2 or 5 digit extension, UCC 128, UCC/EAN-128 K-Mart	
Code Pages	2-D Bar codes	Aztec code, Code 49, Codablock F, Datamatrix code, MaxiCode, Micro PDF417, Micro QR code, PDF417, QR code, TLC 39	
	Graphics	CODEPAGE 437, 737, 850, 851, 852, 855, 857, 860, 861, 862, 863, 865, 866, 869, WINDOWS 1250, 1251, 1252, 1253, 1254, 1255, 1257 Unicode UTF8, UTF16BE, UTF16LE	
Interfaces	Code Pages	Resident graphic file types are BMP and PCX, other graphic formats are downloadable from the software	
	Control Panel	<ul style="list-style-type: none"> <li>• USB 2.0 Device (B-Type)</li> <li>• Serial port: RS-232 (DB-9)</li> <li>• IEEE 802.3 10/100 Base-Tx Ethernet port (RJ-45)</li> <li>• USB Host (A-Type)</li> </ul>	
Real Time Clock	Power	Color TFT LCD with navigation button Calibration button Control key: FEED Power on / off button	
	Environment	Standard	
Humidity	Operation Temperature	Auto Switching 100-240V AC, 50-60Hz	
	Storage Temperature	41°F to 104°F (5°C to 40°C)	
Agency Approvals	Operation	-4°F to 122°F (-20°C to 50°C)	
	Storage	30-85%, non-condensing	
Dimension	Agency Approvals	10-90%, non-condensing	
	Length	CE(EMC), FCC Class A, CB, cUL, EAC, BIS, CCC	
	Height	9.7" (245 mm)	
Weight	Width	6.9" (175 mm)	
	Options	5.3" (136 mm)	
Weight		3.64 lbs ( 1.65 Kg), excluding consumables	
Options		Cutter Label Dispenser External label roll holder for 10" (250 mm) O.D. label rolls External label rewinder	

\* Specifications are subject to change without notice. All company and/or product names are trademarks and/or registered trademarks of their respective owners.

\*\* Minimum print height and maximum print speed specification compliance can be dependent on non-standard material variables such as label type, thickness, spacing, liner construction, etc. Godex is pleased to test non-standard materials for minimum print height and maximum print speed capability.

# Applications

## Applications for Labels & Barcodes

RT200i/RT230i series is your best friend for getting the job done instantly.



### Retail

Price tags, content labels, receipts for registered mails, postage labels, etc.

### Travel & Leisure

By barcoding your tickets, you can track ticket sales and admittance, as well as improve security at your event.

### Special Materials

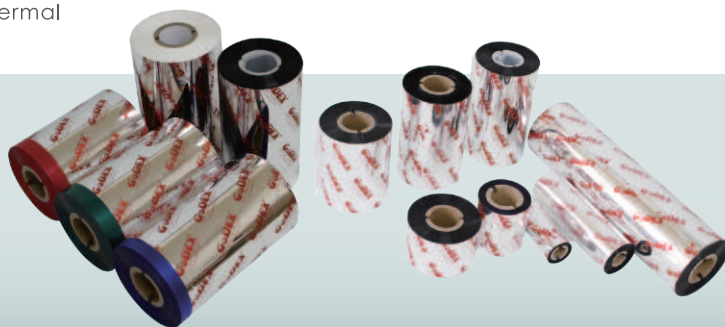
Most kinds of materials from banners, small components labeling, name plates, plastic tubes, plastic cards, cable labeling.

## GoDEX RIBBONS

High quality original GoDEX thermal transfer ribbons

GoDEX offers premium thermal transfer ribbons that will fit most of your printing applications.

- Wax
- Wax/ Resin
- Resin
- Near Edge



## GoDEX LABEL DESIGN SOFTWARE

GoLabel Software / User Friendly

GoLabel is based on a WYSIWYG (what you see is what you get) user interface, makes everything so easy for you to create and print barcode labels. GoLabel is the first-choice label design software that you can't miss it!

Go visit [www.godexintl.com](http://www.godexintl.com) and download GoLabel to experience it!

