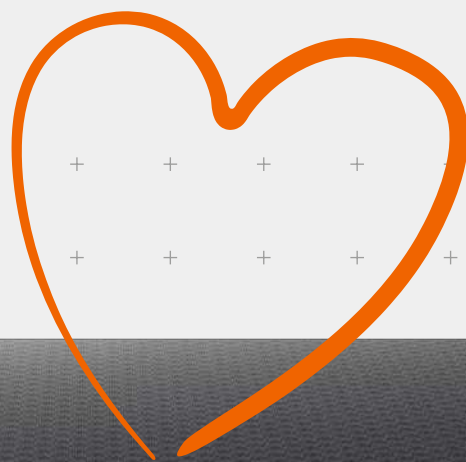


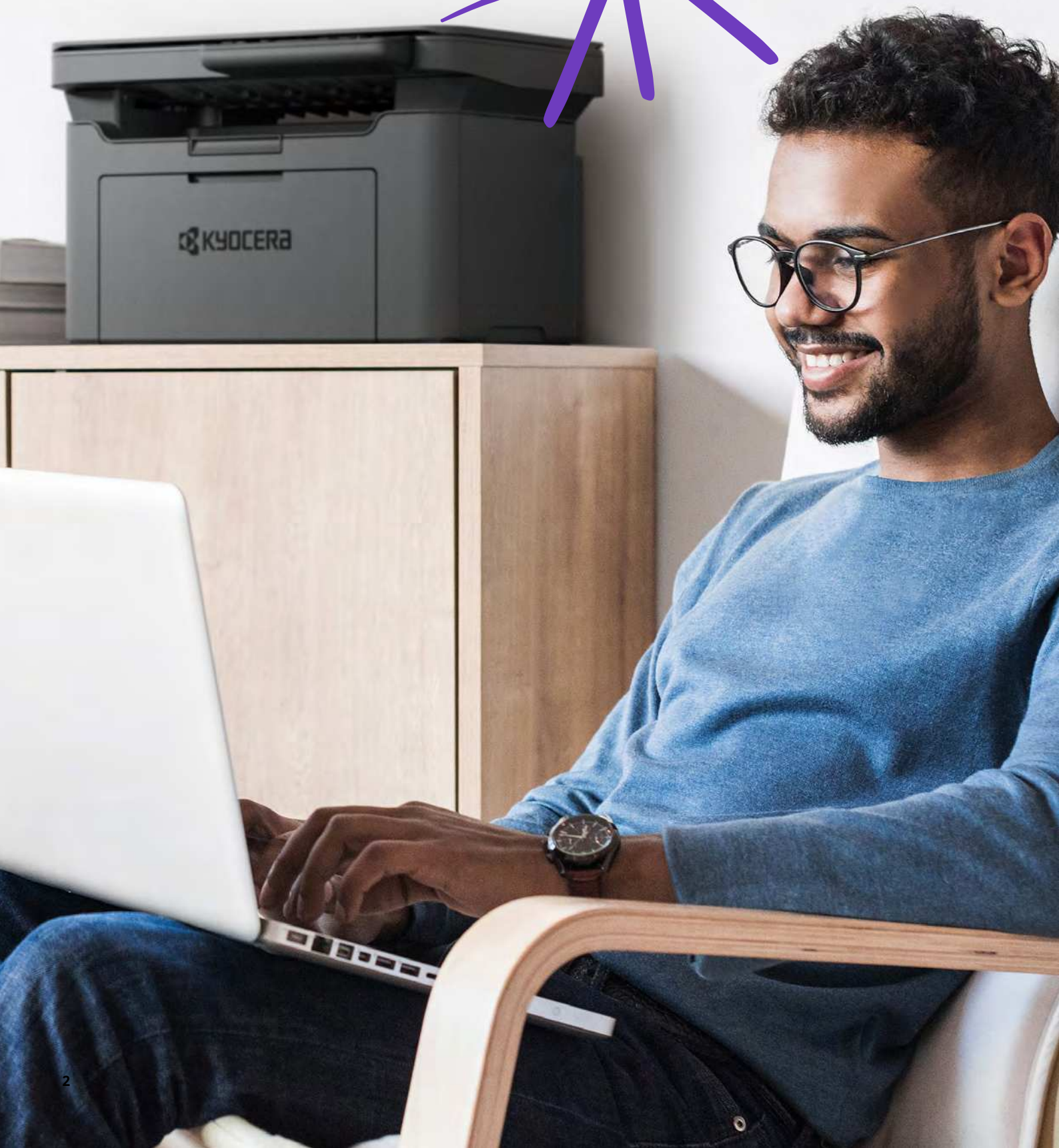
Compact and Easy for busy homes



MA2000 / MA2000w / PA2000/ PA2000w

A4 format Monochrome MFP / Printer

Stay efficient at home.





Match your remote working style.

Users can share fax documents between home and office. For example, you can check fax documents sent to the office by a client from home, and also send a fax document from home to a client via a Kyocera MFP* using the KYOCERA Client Tool. Also, in order to enable companies to compensate remote workers for their printing costs, copy/print/scan counters can be saved on user PCs.

**Kyocera MFP equipped with fax functions*



Mobile Printing

You can conveniently print files, web pages and images using your smartphone or tablet using the KYOCERA Mobile Print application.

Light and compact.

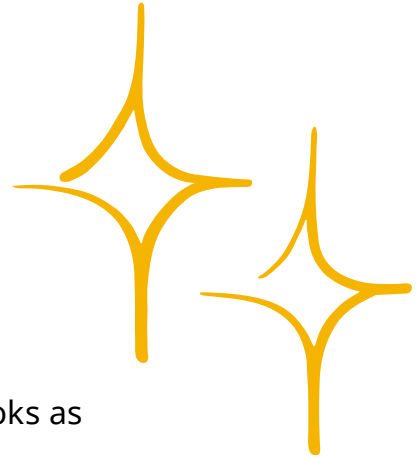
Due to its light and compact design, the device can be placed on the desk at a reachable distance to support your document tasks, whether you are in the office or working from home.

When the workday is over, you can quickly put it aside.

Elevate your interior.

With a sleek and modern design, this eye-catching printer looks as good as it performs.

That geometric pattern textured finish on the top not only gives it a beautiful matte sheen that follows you around as you look around it, but also protects it from fingerprints and dust.



Simple operation.

The device features a simple and intuitive client tool (KYOCERA Client Tool) and an operation panel, enabling users to easily print and scan their documents. It enables you to operate scanning directly from the machine operation panel, without moving back and forth between PC and machine.



+ Copy
+ ID Card Copy
+ Scan

+ Density adjustment
+ Program function

+ Stop
+ Start

+ Wireless setup



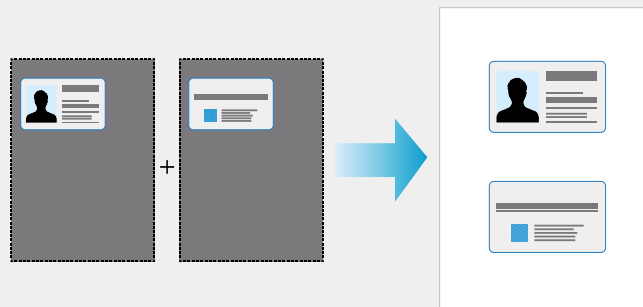
KYOCERA Client Tool

*Image is for illustrative purposes only.
Descriptions may differ from the actual content due to page updates.

Easy ID Card Copy

With the ID Copy program, you can easily copy the front and back sides of a small original such as an ID card or name card onto one side of a sheet of paper. This feature can help you efficiently copy ID cards during a business or a public administration procedure.

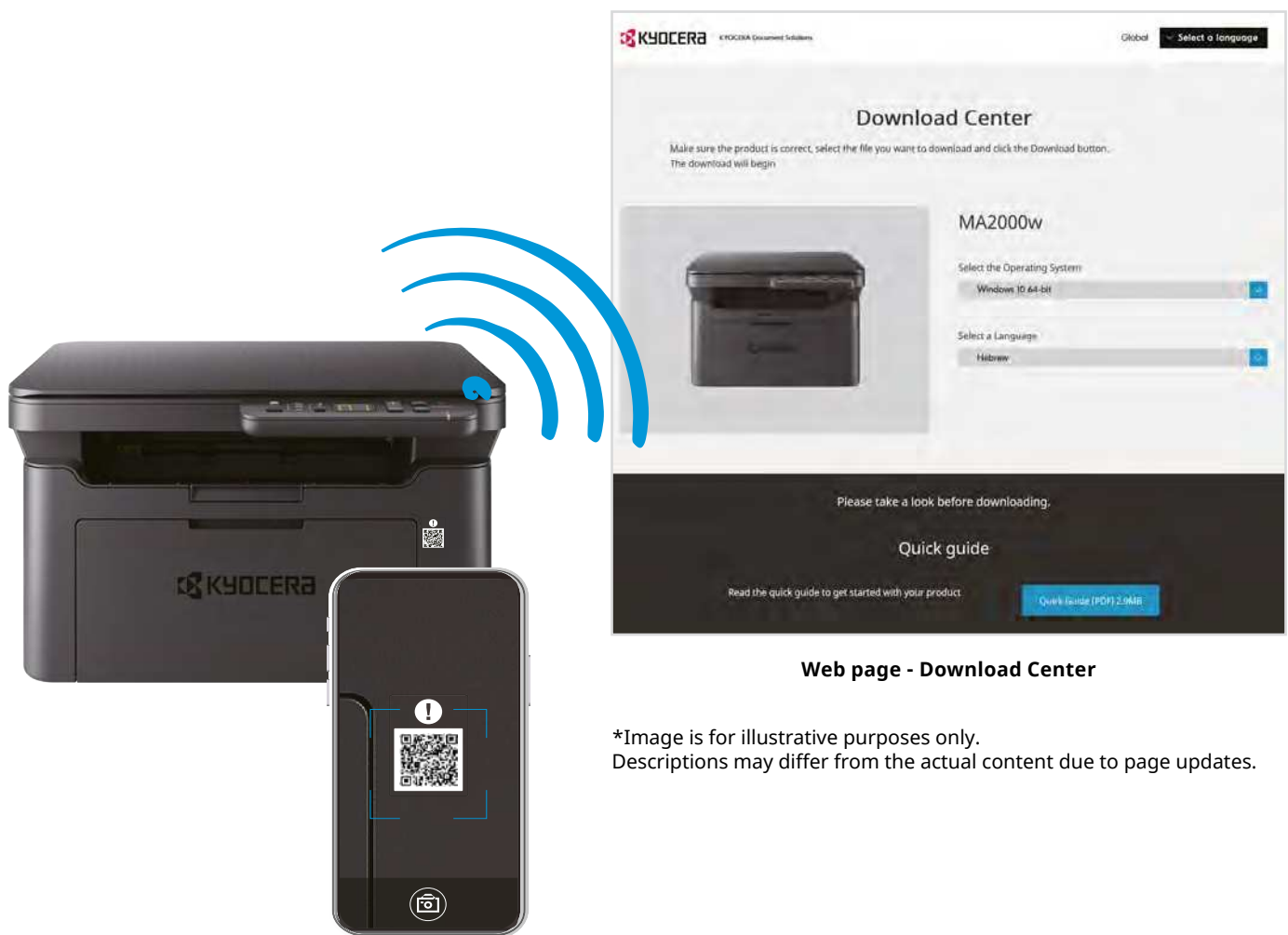
**Available on MFP only*



Easy setup and support.

By accessing the online download center, users can view a video introducing the setup procedure and easily download necessary tools such as the driver, utility and installer.

Furthermore, when there is a paper jam or the device runs out of paper during usage, the KYOCERA Client Tool displays popup messages to guide users to online videos which show solutions to these issues. Using the QR code displayed on the surface, users can quickly access these videos with their smartphones.



*Image is for illustrative purposes only.
Descriptions may differ from the actual content due to page updates.



Greener. Quieter.

The machine's power consumption and noise can be reduced by the **Eco Print mode** setting.



In Eco Print Mode, the TEC value could be lowered by 50% by slowing the print speed down. This helps in keeping your energy costs down whilst working from home. Additionally, in the Eco Print Mode, the operating noise can be reduced as well.

Main Specifications					
Model Name		PA2000	PA2000w	MA2000	MA2000w
GENERAL SPECIFICATIONS					
Type		Desktop			
Printing Method		Single drum Direct transfer method (Laser)			
Main functions		Printer (USB model)	Printer (USB/Wireless Network model)	3 in 1 MFP (USB model)	3 in 1 MFP (USB/Wireless Network model)
Print Speed (A4)		20ppm			
irst Print Time		8.0 sec or less			
Stable Time (From main power ON)		20 sec or less			
Print Resolution		Fast 1200 dpi, 600 dpi			
Max. Monthly Duty Cycle		8,000 pages			
Auto Duplex		None			
Power Source		AC 220 – 240 V, 50/60 Hz			
Power Consumption (Standard configuration)	Copy / Print	- / 330.0		345.3 / 341.1	
	Stand-by	2.1W	2.3W	3.0W	3.3W
Operation Environment	Temperature	10 - 32.5°C			
	Humidity	15 - 80%RH			
Noise (ISO7779/ ISO9296)	Printing	52dB(A)		51dB(A)	
	Stand-by	28dB(A)			
Dimension (W x D x H) (Main Unit)		350 × 233 × 177 mm		370 × 320 × 240 mm	
Weight (Main Unit, With Starter Container)		4.5 kg		6.2 kg	
CONTROLLER					
CPU		ARM926EJ equivalent			
Printer Emulation		Host Based (GDI)			
Memory (Standard/Maximum)		16 MB/ -	32 MB/ -	32 MB/ -	64 MB/ -
Standard Interface		USB 2.0 (Hi-Speed USB)	USB 2.0 (Hi-Speed USB), Wireless LAN	USB 2.0 (Hi-Speed USB)	USB 2.0 (Hi-Speed USB), Wireless LAN
PAPER HANDLING					
Paper Capacity (80 g/m²)		Standard: 150 sheets (80g/m2 equivalent)			
		Max. 150 sheets			
Paper Size	Front Cassette	A4(Legal) to A5R/E, 148x210 ~ 216×356 (mm)			
Paper Weight	Front Cassette	65 – 105 g/m2			
Output Capacity		Max. 50 sheets face-down			
COPY FUNCTION					
Copy Speed (A4)		-	20 pages per minute		
Original Size		-	Maximum A4 (Legal) - Minimum A5		
Resolution		-	600 x 600dpi		
Time to First Copy		-	8 sec or less (300×300dpi), 14 sec or less (600×600dpi)		
Zoom Ratio	Manual	-	25% to 400% (1% per Step)		
Multiple Copy		-	1 to 99		
SCAN FUNCTION					
Max. Scan size		-	Maximum A4(Letter) - Minimum A6R(StatementR)		
Resolution		-	300dpi x 300dpi (Default), 200dpi x 200dpi (Convert to TWAIN Driver) 600dpi x 600dpi , 400dpi x 400dpi (Convert to TWAIN Driver)		
Original Recognition		-	Text, Photo, Text + Photo		
File Format		-	TIFF(MMR Compression), PDF(MMR Compression), PDF(High-compression), JPEG, BMP, PNG		
Transmission Type		-	Scan to PC; Scan to E-mail; TWAIN scan; WIA scan		Scan to PC; Scan to E-mail; TWAIN scan
CONSUMABLES					
Toner Kit		TK-1245			
Page Yield (in accordance with ISO/IEC 19752)		700 pages (starter toner) / 1,500 pages			
Drum		DK-1245			
Page Yield		10,000 pages			

KYOCERA Document Solutions Asia Limited

13/F, Mita Centre, 552-566 Castle Peak Road,
Tsuen Wan, N.T., Hong Kong
Tel : +852-2496-5678 / Fax: +852-2610-2063



www.kyoceradocumentsolutions.asia