

**TASKalfa 508ci Series**

**Up to 52 Pages per minute**

**1200 x 1200 dpi Image Quality\***

**Professional Finishing Options**



**TASKalfa 508ci / 408ci  
TASKalfa 358ci / 308ci**

# Performance without compromise.



[usa.kyoceradocumentsolutions.com](http://usa.kyoceradocumentsolutions.com)



# The power and flexibility to expand as your needs evolve.

Business moves fast. And when you're growing, you want technology that can keep up and grow with you. Enter the compact, energy efficient and affordable Kyocera TASKalfa 508ci Series. These powerful multifunction printers keep pace with your dynamic, fast-growing business through rapid scanning, efficient printing, cloud connectivity and a full suite of paper handling and finishing options.

With an intuitive interface, vibrant color, smart device connectivity and a host of multi-layered security features the TASKalfa 508ci Series enhances your team's workflow. The beauty of these intelligent MFPs is that they can pivot as quickly as your business does, allowing you to choose the capabilities you need at every turn.



## Impressive productivity.



Rapid printing and vibrant color are just the beginning. These multifunction printers pack a punch with intelligent features such as multiple paper feed detection and staple detection that help prevent problems before they even happen, ensuring greater system uptime and reduced staff frustration. Save time by printing directly from your NFC enabled smartphone device or through a wireless connection on your network.

## Versatile media handling.



Whether you're printing thank you cards for your best clients or spreadsheets for your latest analysis, you can configure this system to handle your exact media needs, in a multitude of sizes and weights. Opt for a maximum paper capacity of 3,100 sheets for workflows that require long print runs or designate trays to accommodate specific forms. And when needed, add finishing options that allow you to staple and hole punch with ease.

## Exceptional scanning.



Scan, share and secure your documents quickly. Double-sided documents can be scanned in one pass at up to 120 pages per minute — with the assurance that the paper will flow through with protection against paper skip. Quickly share documents through the control panel, or easily save them to a USB or smart device via the KYOCERA Mobile Print App.

## Comprehensive security.



Keep your data and documents secure with a Data Security Kit that comes built-in. Multiple layers of security can be deployed for network and PDF encryption, even during smart device-initiated print/scan jobs.

# More features that make businesses competitive.



TASKalfa 508ci / 408ci / 358ci control panel

## A touchscreen panel that's bright and intuitive.

From the moment you touch the tablet-like 7" Color Touchscreen Interface (TSI), you'll understand how to make the most of all its features and business applications. Navigate using a highly visual, colorful display that allows page scrolling, horizontal sliding, pinch-to-zoom, and drag-and-drop. It's familiar, straightforward and easy to use. The TASKalfa 308ci comes with numerical keypad.

## The most persuasive presentations are in color.

This is business color output at its best. True 1200 x 1200 dpi print resolution makes everything you print crisp, colorful and vivid. Charts are easier to understand. Data comes to life. Presentations highlight your competitive advantage right from the start. Take advantage of high-quality, affordable color to make all your ideas stand out and get the attention and accolades they deserve.

## Paper handling with flexibility.

Handle your printing needs in-house with a wide range of paper handling options. Choose from finishing options and paper feeders that can accommodate up to 3,100 sheets of plain, bond, recycled, cardstock, transparencies, labels or envelopes (60-200 gsm). This means long, uninterrupted print runs can be done right from your desktop, saving you time and money.

## More possibilities with more finishing options.

This multifunctional printer goes beyond printing and scanning, expanding to meet the exact needs of your business at any stage. Choose from a range of paper handling and finishing options, from a space-saving 300-sheet internal finisher to a professional-grade finisher that staples and hole-punches up to 3,200 sheets. These powerful add-ons help you to tailor every job down to the last detail.



## As compact as you need it to be.

In many offices, space is tight. The TASKalfa 508ci Series fits right into your office with its compact size. Its small size belies its power to maximize your employees' productivity. And, once your needs change, you can easily add output and finishing options to get the exact results you're looking for.

# The TASKalfa 508ci / 408ci / 358ci / 308ci Options



Only available for the TASKalfa 508ci / 408ci / 358ci models

Available on all TASKalfa 508ci / 408ci / 358ci / 308ci models

<sup>1</sup> Requires AK-5100

<sup>2</sup> Requires PF-5120



# Keep everyone on the same page.



## Support employees with mobile capabilities

Keep employees moving swiftly with print, scan and send features at their fingertips. KYOCERA Mobile Print, Apple AirPrint®, Google Cloud Print™, and Mopria® help them easily use the TASKalfa to its full advantage. Standard Near Field Communication (NFC) for Android™ and Wi-Fi Direct provides added smart device convenience.

## Simplify IT management

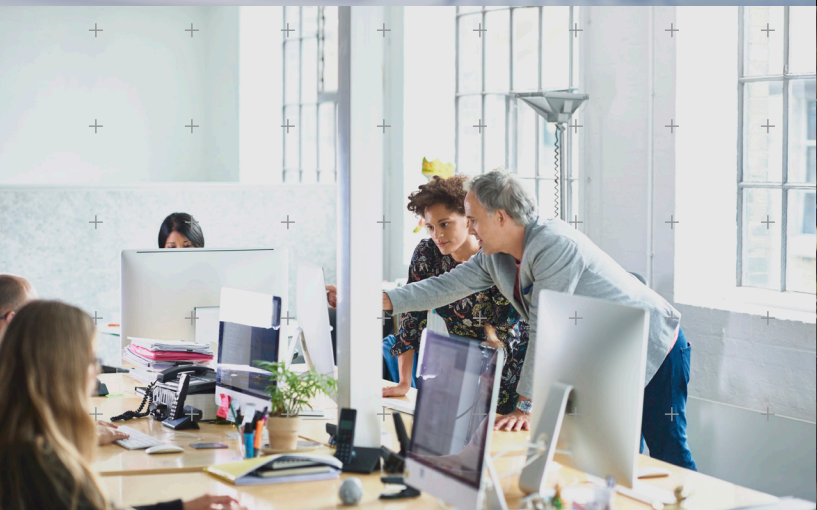
Simplify IT management with Command Center RX from Kyocera, a standard web-based interface that enables remote printing, file sharing, device monitoring, settings updates and address book entry, right from your desktop.

## Print and share frequently used files, securely

Print and share frequently used files with Document Box, a secure area on the hard drive where documents are conveniently stored and easily retrieved.

## Reduce costs

Reduce costs with Proof Copy Mode. Print and approve a sample copy before duplicating large documents to prevent waste.





## Remote monitoring redefined.

Optimize device uptime and reduce costs with KYOCERA Fleet Services (KFS), a highly-secure cloud-based monitoring solution that offers real-time visibility into:

- **Device Status:** Take a proactive approach to error resolution to ensure that your fleet operates at peak performance.
- **Counter Activity:** Eliminate administrative burden with automatic meter reading, for accurate and timely billing.
- **Supply Levels:** View consumable levels to prevent unnecessary workflow interruptions.
- **Usage Trends:** Identify print, copy, scan and error code trends to make more informed decisions (fleet right-sizing), and further optimize workflow.



## Keep work safe and secure.

The TASKalfa 508ci Series offers standard security features built into the device software, as well as optional enhancements to help keep sensitive documents from falling into the wrong hands. Work confidently with:

- Standard Data Security Kit (E) for overwrite and encryption, to help safeguard mission-critical workflows.
- Standard Embedded TPM
- Standard Secure Boot
- Standard Run-Time Integrity Check
- Added "Power Users"
- PDF Encryption to restrict access for displaying and printing PDFs by assigning a secure password.
- Private Print function with password protection and User Authentication.



## There's an app for that.

Kyocera's robust portfolio of customizable business applications lets your team accomplish even more, further boosting productivity. Leverage information how, when and where you need it.

Take advantage of KYOCERA Net Manager, a server-based web application, to efficiently provide secure printing and copying and enable easy accounting of print-related expenses. The Print&Follow function allows users to securely print to any printer managed by KYOCERA Net Manager.

Kyocera Business Apps are powered by HyPAS™ (Hybrid Platform for Advanced Solutions), a Kyocera-developed software platform that expands your MFP's core capabilities with simple touch-screen operations that address your unique workflow needs. From mobile and cloud to cost control and security solutions, these business applications seamlessly and securely integrate with Kyocera MFPs.



## Print smarter for the planet.

The TASKalfa 508ci Series works confidently with your business to maintain a tidy environmental footprint by reducing waste and eliminating unnecessary energy consumption.

- Exclusive long-life technology and consumables.
- Programmable Energy Saver function helps you control costs, and Low Typical Electricity Consumption (TEC) values support your goals for energy conservation.
- ENERGY STAR® version 3 compliant, with Low Power Mode and Sleep Mode settings.
- Environmentally-friendly Waste Toner Bottle design.



Each model is a powerhouse that moves at the speed of your business to get all of your important tasks done. For detailed information regarding the performance of the individual models listed below, please refer to the TASKalfa 508ci Series Specifications Guide.

## Specifications



### TASKalfa 508ci

**Pages Per Minute:** Color and Black – Letter: 52 ppm, Legal: 42 ppm

**Warm Up Time:** 24 Seconds or Less (Power On)

**First Page Out:**

Copy: 5.3 Seconds or Less Black,  
6.2 Seconds or Less Color  
Print: 5.4 Seconds or Less Black,  
6.4 Seconds or Less Color

**Typical Electricity Consumption (TEC):** 120V: 0.71 kWh/week; 220V: 0.67 kWh/week

**Weight:** 109 lbs  
(excludes Optional Document Processor)

**Maximum Monthly Duty Cycle:**  
150,000 Pages per Month

**Dimensions:** 21.65" W x 21.65" D x 24.13" H

### TASKalfa 408ci

**Pages Per Minute:** Color and Black – Letter: 42 ppm, Legal: 34 ppm

**Warm Up Time:** 24 Seconds or Less (Power On)

**First Page Out:**

Copy: 5.8 Seconds or Less Black,  
6.9 Seconds or Less Color  
Print: 5.4 Seconds or Less Black,  
6.4 Seconds or Less Color

**Typical Electricity Consumption (TEC):** 120V: 0.59 kWh/week; 220V: 0.55 kWh/week

**Weight:** 109 lbs (excludes Optional Document Processor)

**Maximum Monthly Duty Cycle:**  
150,000 Pages per Month

**Dimensions:** 21.65" W x 21.65" D x 24.13" H

### TASKalfa 358ci

**Pages Per Minute:** Color and Black – Letter: 37 ppm, Legal: 30 ppm

**Warm Up Time:** 24 Seconds or Less (Power On)

**First Page Out:**

Copy: 5.9 Seconds or Less Black,  
7.3 Seconds or Less Color  
Print: 5.5 Seconds or Less Black,  
6.5 Seconds or Less Color

**Typical Electricity Consumption (TEC):** 120V: 1.86 kWh/week; 220V: 1.66 kWh/week

**Weight:** 104.5 lbs  
(excludes Optional Document Processor)

**Maximum Monthly Duty Cycle:**  
100,000 Pages per Month

**Dimensions:** 21.65" W x 19.96" D x 29.13" H

### TASKalfa 308ci

**Pages Per Minute:** Color and Black – Letter: 32 ppm, Legal: 26 ppm

**Warm Up Time:** 20 Seconds or Less (Power On)

**First Page Out:**

Copy: 6.4 Seconds or Less Black,  
7.8 Seconds or Less Color  
Print: 7.0 Seconds or Less Black,  
8.0 Seconds or Less Color

**Typical Electricity Consumption (TEC):** 120V: 1.55 kWh/week; 220V: 1.43 kWh/week

**Weight:** 109.3 lbs (includes Standard RADF)

**Maximum Monthly Duty Cycle:**  
100,000 Pages per Month

**Dimensions:** 21.65" W x 19.96" D x 29" H (includes RADF)

\*1200 x 1200 dpi at reduced speed



Specifications and design are subject to change without notice. For the latest on connectivity visit [usa.kyoceradocumentsolutions.com](http://usa.kyoceradocumentsolutions.com). TASKalfa, KYOCERA Net Manager, and Command Center RX are trademarks of the Kyocera Companies. AirPrint is a trademark of Apple, Inc. Google Cloud Print is a trademark of Google, Inc. Mopria is a trademark of Mopria Alliance, Inc. All other trademarks are the property of their respective owners.