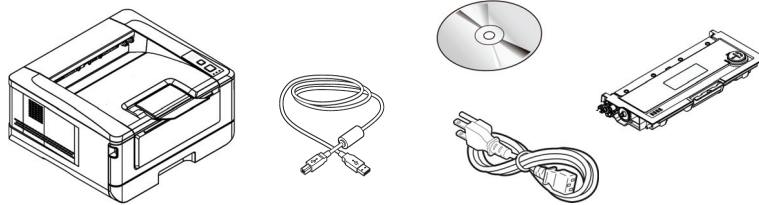




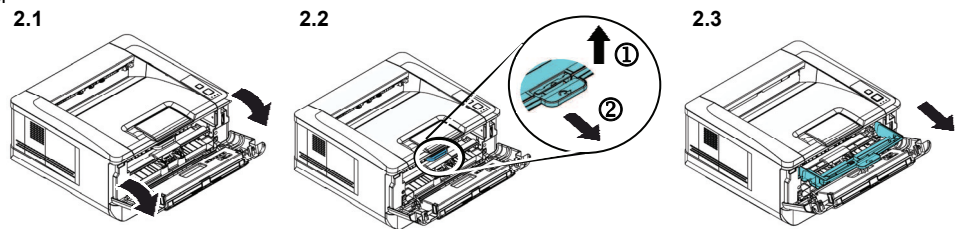
### 1 Package Contents

Lieferumfang  
 Ce que contient la boîte  
 Contenuti della confezione/Contenido del paquete/O que vem na caixa  
 包裝內容  
 包裝內容

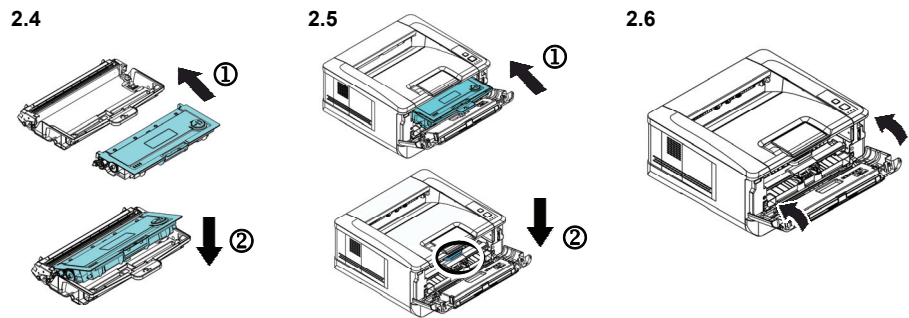


### 2 Install Toner Cartridge

Tonerkartusche installieren  
 Installation de la cartouche de toner  
 Installazione della cartuccia toner 2.1  
 Instalar el cartucho de toner  
 Instalação do Cartucho de Toner  
 安裝碳粉匣  
 安裝墨粉盒

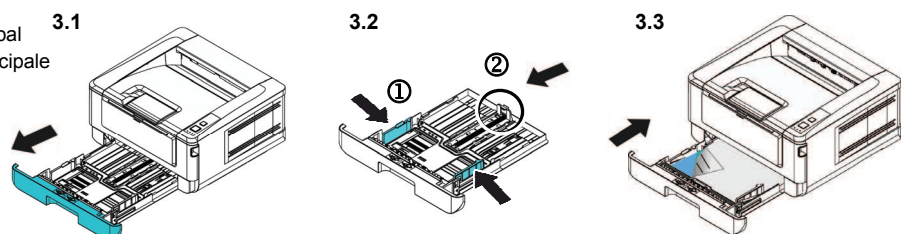


### 2



### 3 Load Paper into the Main Tray

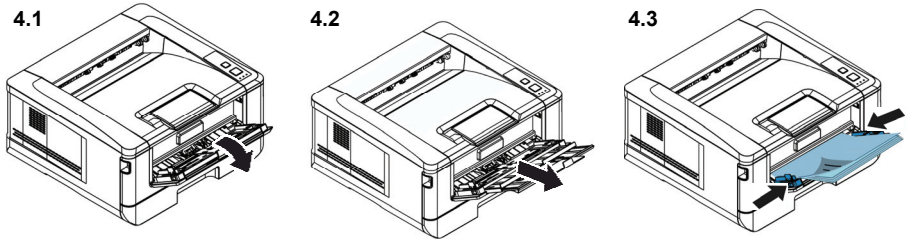
Papier im Haupteinzug einlegen 3.1  
 Chargement du bac d'alimentation principal  
 Caricamento del vassoio di ingresso principale  
 Cargar la bandeja de entrada principal  
 Carregamento da Bandeja de Entrada Principal  
 將紙張放入主要紙匣  
 将纸张放入主要纸盒



# A4 Printer

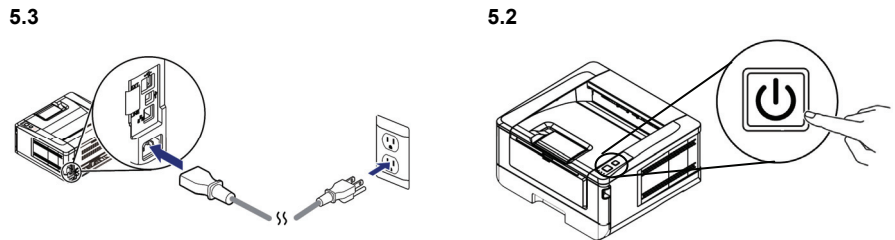
## 4 Load Paper into the Manual Tray

Papier im manuellen Papiereinzug einlegen  
Chargement du bac manuel  
Caricamento del vassoio manuale  
Cargar la bandeja manual  
Carregamento da Bandeja Manual  
將紙張放入手動紙匣  
將紙張放入手動紙盒



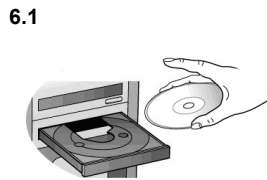
## 5 Connect to Power

Mit der Stromversorgung verbinden  
Brancher l'alimentation  
Collegamento all'alimentazione  
Conectar la alimentación  
Conecte à energia  
連接電源  
连接电源



## 6 Install Printer Driver

Drucker- installieren  
Installation des pilotes du Imprimante  
Installazione dei driver di stampante  
Instalar los controladores de impresora  
Instalação do Impressora Drivers  
安裝驅動程式  
安装驱动程序



6.2  
**Install Printer Driver**  
**View Manual**

## 7 Connect to Computer

Mit dem Computer verbinden  
Raccorder à l'ordinateur  
Collegamento al computer  
Conectar a su PC  
Conecte ao computador/連接電腦/连接电脑

### a) USB

### b) Ethernet (網路)



## Refer to the Manual in the CD for more information.

Weitere Informationen finden Sie auf der Anleitung auf der CD.  
Pour plus d'informations, référez-vous au manuel sur le CD.  
Fare riferimento al manuale contenuto nel CD per altre informazioni.  
Para obtener más información, consulte el manual que se encuentra en el CD.  
Para mais informações, consulte o manual no CD.  
更多操作的細節，請參考光碟內的使用手冊。  
更多操作的细节，请参考光盘內的使用手冊。



### European Union Regulatory Notice

Products bearing the CE marking comply with the following EU Directives:

- Low Voltage Directive 2014/35/EC
- EMC Directive 2014/30/EC
- Restriction of the use of certain hazardous substances (RoHS) Directive 2011/65/EU
- RED (Radio Equipment Directive) (2014/53/EC)