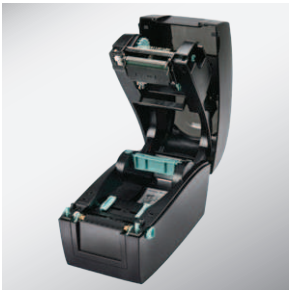




Desktop Printers RT200 / RT230

Mini Barcode Printer Fits On Every Desk

The small footprint RT200 is a perfect printer solution where space is tight and value pricing is important



Modern clam-shell design makes it simple to load labels



Ethernet, Serial and USB are standard features adding flexibility and power



Full-range adjustable sensor enables printing on small and difficult labels



Innovative "C" button makes label Calibration simple and fast



RT200 / RT230

Desktop Printer

Model		RT200	RT230
Print Method		Thermal Transfer / Direct Thermal	
Resolution		203 dpi (8 dots/mm)	300 dpi (12 dots/mm)
Print Speed		5 IPS (127 mm/s)	4 IPS (102 mm/s)
Print Width		2.12" (54 mm)	2.24" (56.9 mm)
Print Length		Min. 0.16" (4 mm)**; Max. 68" (1727 mm)	Min. 0.16" (4 mm)**; Max. 30" (762 mm)
Processor		32 bit RISC CPU	
Memory	Flash	8 MB Flash (4 MB for user storage)	
	SDRAM	16 MB SDRAM	
Sensor Type		Adjustable reflective sensor (full range) Fixed transmissive sensor, central aligned	
Media	Types	Continuous form, gap labels, black mark sensing and punched hole; label length set by auto sensing or programming	
	Width	Min. 0.6" (15 mm) – Max. 2.36" (60 mm)	
	Thickness	Min. 0.003" (0.076 mm) – Max. 0.008" (0.2 mm)	
	Label Roll Diameter	Max. 5" (127 mm)	
	Core Diameter	1" (25.4 mm), 1.5" (38.1 mm)	
Ribbon	Types	Wax, wax / resin, resin	
	Length	360' (110 m)	
	Width	Min. 2.20" (56 mm) – Max. 2.32" (59 mm)	
	Ribbon Roll Diameter	Max. 1.5" (38 mm)	
	Core Diameter	0.5" (12.7 mm)	
Printer Language		EZPL, GEPL, GZPL auto switch	
Software	Label Design Software	GoLabel (for EZPL only)	
	Driver	Windows 2000, XP, Vista, Windows 7, 8.1 and 10, Windows Server 2003 & 2008 & 2012, MAC, Linux	
	DLL	Win CE, .NET, Android, Windows Mobile, Windows 2000 / XP / VISTA / Windows 7 / Windows 8.1/Windows 10	
Resident Fonts	Bitmap Fonts	6, 8, 10, 12, 14, 18, 24, 30, 16X26 and OCR A&B Bitmap fonts 90°, 180°, 270° rotatable, single characters 90°, 180°, 270° rotatable Bitmap fonts 8 times expandable in horizontal and vertical directions	
	TTF Fonts	TTF Fonts (Bold / Italic / Underline). 0°, 90°, 180°, 270° rotatable	
Download Fonts	Bitmap Fonts	Bitmap fonts 90°, 180°, 270° rotatable, single characters 90°, 180°, 270° rotatable	
	Asian Fonts	16x16, 24x24. Traditional Chinese (BIG-5), Simplified Chinese (GB2312), Japanese (S-JIS), Korean (KS-X1001) 90°, 180°, 270° rotatable and 8 times expandable in horizontal and vertical directions	
	TTF Fonts	90°, 180°, 270° rotatable	
Barcodes	1-D Bar codes	China Postal Code, Codabar, Code 11, Code 32, Code 39, Code 93, Code 128 (subset A, B, C), EAN-8, EAN-13, EAN 8/13 (with 2 & 5 digits extension), EAN 128, FIM, German Post Code, GS1 DataBar, HIBC, Industrial 2 of 5, Interleaved 2-of-5 (12 of 5), Interleaved 2-of-5 with Shipping Bearer Bars, ISBT – 128, ITF 14, Japanese Postnet, Logmars, MSI, Postnet, Plessey, Planet 11 & 13 digit, RPS 128, Random Weight, Standard 2 of 5, Telepen, UPC-A, UPC-E, UPC-A and UPC-E with EAN 2 or 5 digit extension, UCC 128, UCC/EAN-128 K-Mart	
	2-D Bar codes	Aztec code, Code 49, Codablock F, Datamatrix code, MaxiCode, Micro PDF417, Micro QR code, PDF417, QR code, TLC 39	
Code Pages		CODEPAGE 437, 737, 850, 851, 852, 855, 857, 860, 861, 862, 863, 865, 866, 869, WINDOWS 1250, 1251, 1252, 1253, 1254, 1255, 1257 Unicode UTF8, UTF16BE, UTF16LE	
Graphics		Resident graphic file types are BMP and PCX, other graphic formats are downloadable from the software	
Interfaces		USB 2.0 Device (B-Type) Serial port: RS-232 (DB-9) IEEE 802.3 10/100 Base-Tx Ethernet port (RJ-45)	
Control Panel		Two LEDs: Ready, Status Calibration button Control Key: FEED Power on / off button	
Real Time Clock		Standard	
Power		Auto Switching 100-240V AC, 50-60Hz	
Environment	Operation Temperature	41°F to 104°F (5°C to 40°C)	
	Storage Temperature	-4°F to 122°F (-20°C to 50°C)	
Humidity	Operation	30-85%, non-condensing	
	Storage	10-90%, non-condensing	
Agency Approvals		CE(EMC), FCC Class A, CB, cUL, EAC, BIS, CCC	
Dimension	Length	9.7" (245 mm)	
	Height	6.9" (175 mm)	
	Width	5.3" (136 mm)	
Weight		3.53 lbs (1.6 Kg), excluding consumables	
Options		Cutter Label Dispenser External label roll holder for 10" (250 mm) O.D. label rolls External label rewinder	

* Specifications are subject to change without notice. All company and/or product names are trademarks and/or registered trademarks of their respective owners.

** Minimum print height and maximum print speed specification compliance can be dependent on non-standard material variables such as label type, thickness, spacing, liner construction, etc. Godex is pleased to test non-standard materials for minimum print height and maximum print speed capability.

Applications

Applications for Labels & Barcodes

RT200/RT230 series is your best friend for getting the job done instantly.



Health Care

Tube tags, pharmaceutical labels, patient identification, medical records and laboratory specimen tags.



Travel & Leisure

By barcoding your tickets, you can track ticket sales and admittance, as well as improve security at your event.



Administration

ID cards, document and records management, access control management, library management & organization and classification system, ISBN application, etc.

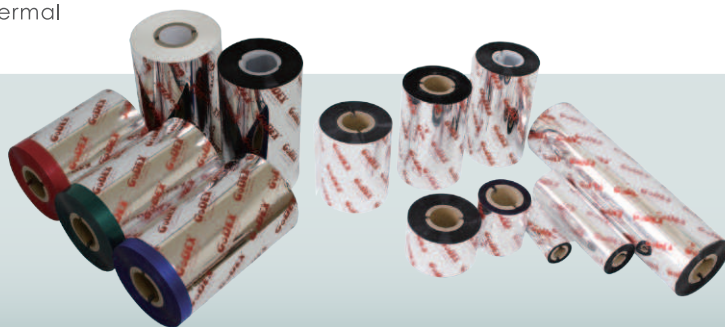
GoDEX

RIBBONS

High quality original GoDEX thermal transfer ribbons

GoDEX offers premium thermal transfer ribbons that will fit most of your printing applications.

- Wax
- Wax/ Resin
- Resin
- Near Edge



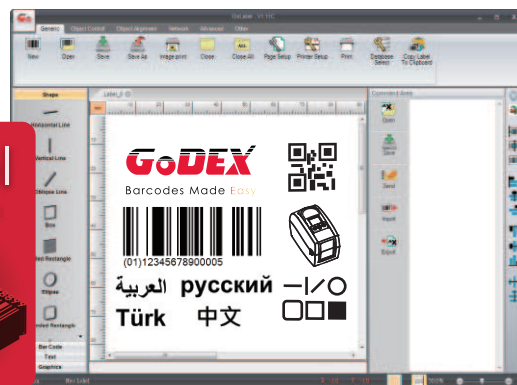
GoDEX

LABEL DESIGN SOFTWARE

GoLabel Software / User Friendly

GoLabel is based on a WYSIWYG (what you see is what you get) user interface, makes everything so easy for you to create and print barcode labels. GoLabel is the first-choice label design software that you can't miss it!

Go visit www.godexintl.com and download GoLabel to experience it!



GoDEX
www.godexintl.com

Godex International
(Headquarters)
Telephone : +886 2 2225 8580
Contact us : infoGT@godexintl.com

Godex Americas
Telephone : +1 805 987 5100
Contact us : infoGA@godexintl.com

Godex China
Telephone : +86 21 56651313
Contact us : infoGC@godexintl.com

Godex Europe
Telephone : +49 2195 59599 0
Contact us : infoGE@godexintl.com