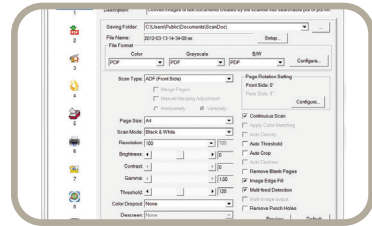


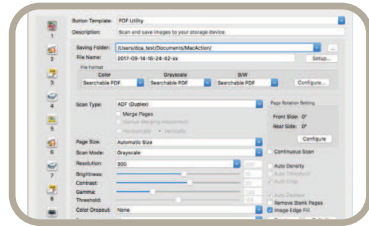
## ❖ SOFTWARE



**DocAction**

### Plustek DocAction

Button utility to simplify document scanning. DocAction enables you to specify your personalized scanning configuration settings and scan documents with the click of a button. Scanned documents are automatically sent directly to Printer, Email, Folder or FTP. DocAction also enables you to scan directly to many imaging and document management applications. DocAction saves scanned documents in all common imaging formats including JPEG, TIFF, and PDF.



**MacAction**

### Plustek MacAction

Plustek MacAction is the button utility software enables scanning by simply touching a button. The easy-to-use function provides users with a platform to edit the scan settings and modify the saving destination. MacAction also enables you to scan directly and save scanned documents in all common imaging formats including JPEG, TIFF, MULTI-TIFF, BMP, and PDF.

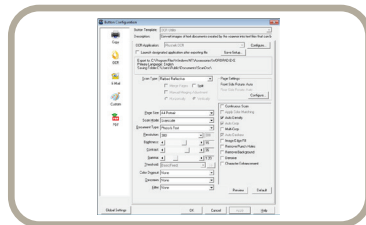
## ❖ BUILT-IN OCR



**Plustek OCR**

### Plustek OCR \* (Windows)

Plustek OCR (powered by ABBYY) helps to convert scanned paper documents, photos, and PDF files into editable formats. With Plustek OCR, you can convert paper documents to editable formats, including Microsoft® Word®, and Excel®, edit resulting documents, and reuse their text and other content.



**DocOCR**

### Plustek DocOCR (Mac)

DocOCR is a OCR software which enables you convert files into searchable PDF format simple and more easily.

### Hardware Requirements

Pentium® IV 2.4 GHz processor  
DVD-ROM Driver  
One available USB 2.0 Port  
1GB RAM (2GB or higher recommended)  
2GB free HDD space (3GB or larger recommended)

© 2020 Plustek  
Plustek is registered trademarks of Plustek.

ABBYY™ FineReader™ © ABBYY. OCR by ABBYY. ABBYY and FineReader are trademarks of ABBYY Software, Ltd. which may be registered in some jurisdictions.  
Any other products or company names appearing in this document are the trademarks or registered trademarks of the respective companies.



### Specification

Optical Resolution	600 dpi
Max. Hardware Resolution	600 x 600 dpi
Technology	CIS x 2
ADF Capacity	100 sheets (A4/Letter, 70 g/m <sup>2</sup> or 18 Lbs) Note: Maximum ADF capacity varies, depending upon paper weight.
ADF Scanning Speed	40 ppm/ 80 ipm (Grayscale/B&W mode, 200 dpi, A4 Portrait) 40 ppm/ 80 ipm (Grayscale/B&W mode, 300 dpi, A4 Portrait) 40 ppm/ 80 ipm (Color mode, 200 dpi, A4 Portrait) 30 ppm/ 60 ipm (Color mode, 300 dpi, A4 Portrait) Note: Results may vary depending upon your scanning application, computer processor and system memory.
Scan Area(W x L)	Max: 216 x 5080 mm (8.5" x 200") Min: 13.2 x 13.2 mm (0.52" x 0.52")
Acceptable Paper Sizes (W x L)	Max: 244 x 5080 mm (9.6" x 200") Min: 50.8 x 50.8 mm (2" x 2")
Acceptable Paper Weight for ADF	40 to 220 g/m <sup>2</sup> (10 to 58 Lbs)
Daily Duty Scan (Sheets)	4000
Roller Lifetime (Scans)	300000 (Customer replaceable)
Pad Lifetime (Scans)	100,000
Power Adapter	24Vdc, 1.25 A
Interface	USB 2.0 High Speed
4 buttons	Scan, PDF, File, Standby
Physical Dimensions(W x D x H)	318.7 x 230.7 x 228.3 mm(12.55" x 9.08" x 8.99")
Weight	2.7 Kg (5.95 Lbs)
Protocols	TWAIN Complaint
OS Support	Windows XP / Vista / 7 / 8 / 10 Mac OS 10.10-11.2

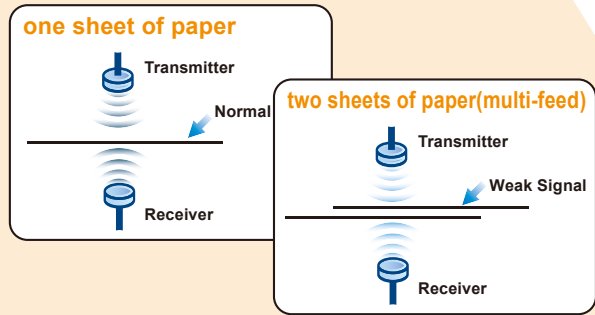
Fits Anywhere, Portable,  
**Easy Document & Plastic Card** Scanning



The SmartOffice PS3140U document scanner makes document archiving as a simple task. The PS3140U can do the high-speed scanning easily with the touch of one button, 40pages per minute with newly TWAIN driver and 100-page automatic document feeder make PS3140U become the first choice for document digitizing. It adapts most of the working environment. Alongside its Plustek DocAction and DocTwain, it offers users more flexibility and support document auto-size,which avoids spending extra time to manually adjust paper size before scanning. The PS3140U also provide you to do more productivity by supporting batch scanning, it helps you not only save the cost but also the time.

## ❖ KEY FEATURES

- **Robust 100-page Automatic Document Feeder (ADF) with enhanced hard embossed card scanning**
- **TWAIN and WIA Drivers – Allows Full Document Management Solutions Implementations**
- **Comes with Plustek DocAction and Plustek DoctWAIN**
- **Advanced paper handling technology for the ultimate in feeding reliability**
- **Fast, 40ppm / 80ipm scanning in monochrome and grayscale**
- **3 colour dropout modes for advanced OCR processing**
- **Enhanced for the ultimate in performance and reliability**
- **Exceptional 300 dpi color scanning at 30ppm / 60ipm**



### Intelligent Misfeed Function

The PS3140U scanner prevents multi-feeds by checking the thickness of documents and detecting overlapping pages with the built-in ultrasonic multi-feeds detection capability. Users will be warned when a multi-feed is detected.



### Robust Paper Handling

Combining fast document feeding with the advantage of robust paper handling, the SmartOffice PS3140U is an ideal choice for enterprise who have a demanding workload and limited budget. Plastic and other rigid cards such as ID cards, Drivers Licenses, Membership Cards and Insurance Cards.



### Scan multiple sizes of document and cards

Documents such as handouts for meetings or checks can be loaded directly in the scanner. The dedicated paper feeding handling scans from plastic card to long paper, the advanced image processing optimizes the scan result of each size of document and the stability.

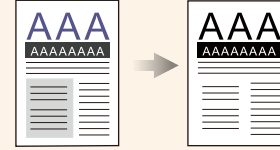


### Exceptional Productivity

Operation of the PS3140U is simple with Plustek's exclusive software- DocAction. Users can simply scan and send to dedicated folder. What's best is that the scanned image can also be saved to your desired application. Moreover, the document format can be set to jpg, pdf.....etc.

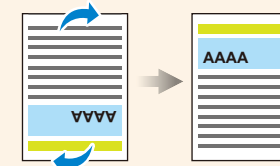
#### 1 Auto Threshold

Automatically threshold the current image into a binary black and white image.



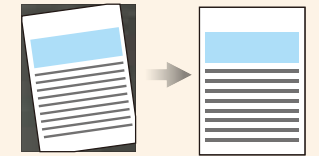
#### 2 Auto Rotate

Automatically rotates document based on the contents of the document.



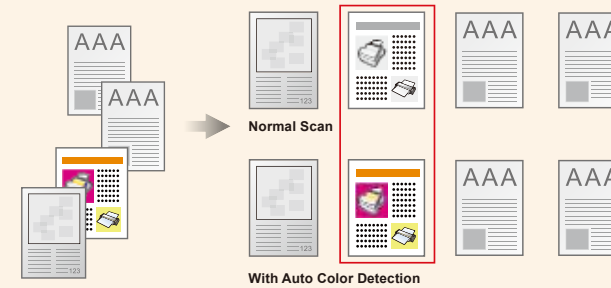
#### 3 Auto Crop & Deskew

Automatically straightens and crops image to the documents actual size.



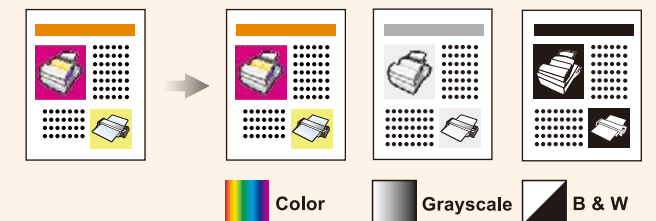
#### 4 Auto Mode

Automatically detects document color and scans document in color, grayscale or black & white mode.



#### 5 Multi-Image Output

Scans and saves documents in 2 or 3 color modes at same time.

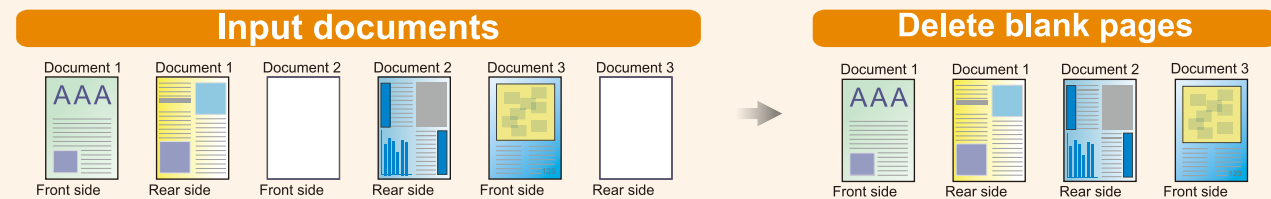


#### 6 Color Dropout



#### 7 Blank Page Removal

Automatically removes blank pages without manual editing.



Fast duplex scanning at speeds up to 40 pages per minute in Grayscale mode.



Effective scanning with large Automatic Document Feeder up to 100 pages.



Automatically straightens and crops image to the documents actual size.



It can automatically crop your image or document according to your document edge.



Save paper documents as searchable PDFs at the touch of a button and find your information faster.



The ultrasonic detection will reduce the chance of multi-feeding during the scanning process.