

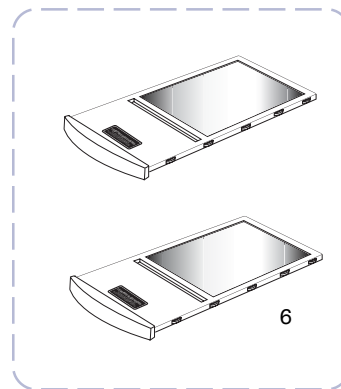
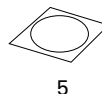
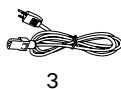
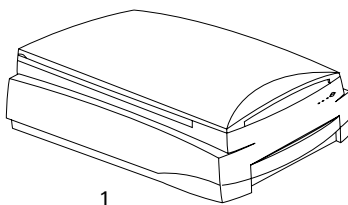
Start Here

▼ Installing your Microtek Bio-5000 Plus

1 Unpack Contents

Unpack your scanner package and check for major components.

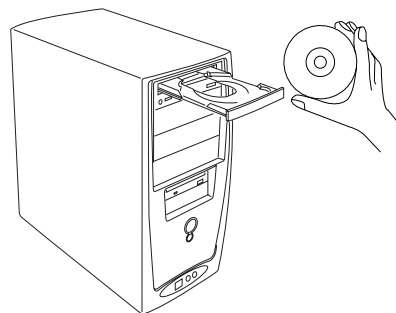
1. Bio-5000 Plus scanner
2. Hi-Speed USB cable
3. Power cord
4. Vinyl Strips
5. Software CDs/DVDs
6. Leak-Free Glass Holder (2 pcs)



2 Install Software

Important: Do not remove the yellow sticker from your scanner until you are told to do so. You must install software before connecting your scanner.

Always close any open programs, and turn off Anti-virus utilities before installing software.



- A. Place the **Adobe CD-ROM** into the CD-ROM drive, and install the software. Skip this step if you have a newer version of Photoshop Elements already installed on your computer.
- B. Place the **Microtek Software CD-ROM** into the CD-ROM drive, and follow the on-screen instructions to install the driver and software.

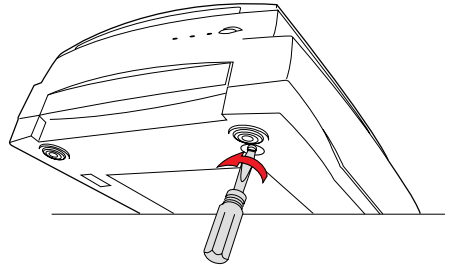
NOTE: If the Microtek Software Installer screen does not come up automatically, double-click the following in succession: "My Computer"; the CD-ROM icon; then cdsetup.exe to start the installer program.

- C. Restart your computer at the end of all software installation.

3

Unlock Scanner

- A. Remove the yellow "Unlock" sticker from your digitizer.
- B. With the scanner power off, tilt the front right corner of the scanner to see the locking screw at the bottom.
- C. Using a screwdriver, push and turn the locking screw counterclockwise to the unlock position. When successfully unlocked, the screw will push out a little, protruding slightly from the bottom of the scanner.



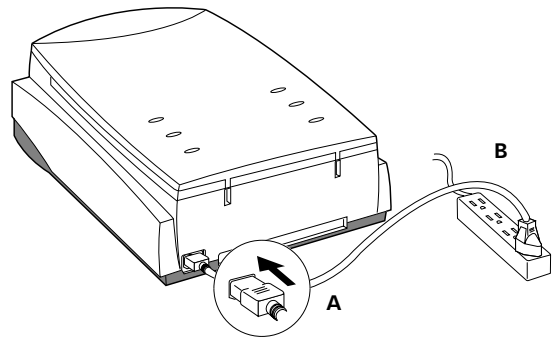
NOTE: To lock the scanner (for shipping and other reasons), refer to the Bio-5000 Plus Supplement in the Microtek software CD.

4

Connect Scanner

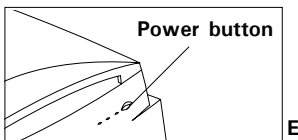
To the power adapter

- A. Connect the power cord to the back of the scanner.
- B. Plug the power cord into a power source.

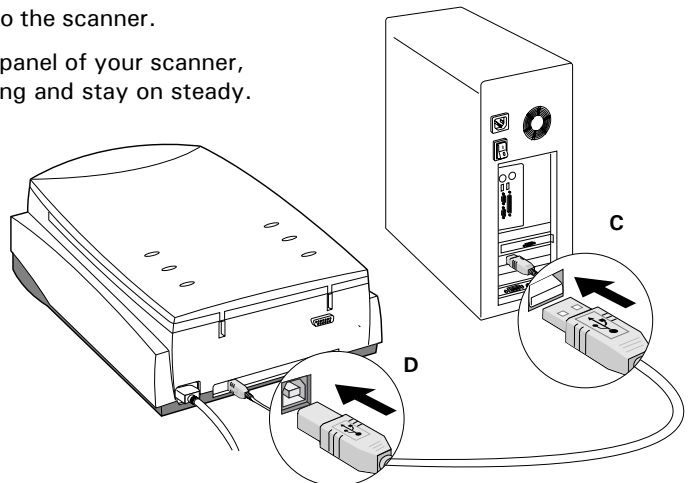


To the Hi-Speed USB cable

- C. Connect one end of the cable to your computer.
- D. Connect the other end of the cable to the scanner.
- E. Press the power button at the front panel of your scanner, and wait for the lights to stop blinking and stay on steady.



The system will detect your scanner automatically.

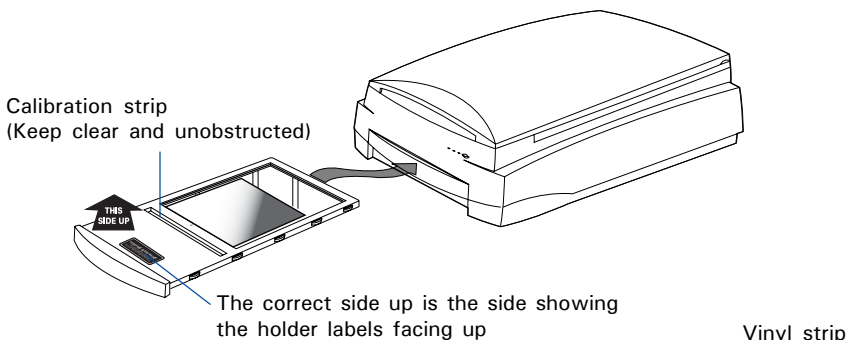


Position the Scan Material

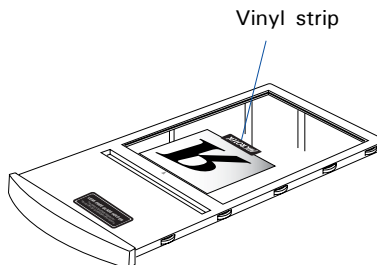
Position Electrophoresis Gels/Film or Transparent Film

To scan the electrophoresis gels/film (such as 1D/2D gels, SDS-PAGE, western/northern/southern blots, or membranes) and transparent film (such as slide, positive film, or reversal film), please use the **Leak-Free Glass Holder** together.

1. Place the gel or film to be scanned on top of the Leak-Free Glass Holder.
2. Then, insert the Leak-Free Glass Holder into the lower compartment (transparency bay) of the scanner. Make sure the Leak-Free Glass Holder is inserted correct side up.



Please take note that if you want to scan film, place the film to be scanned **face down** on top of the holder, and secure the film to the glass surface if needed with the vinyl strips provided.

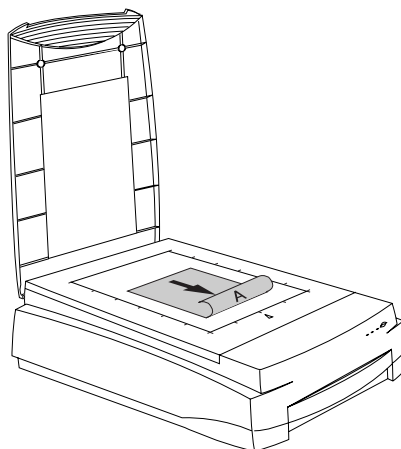


Position Reflective Materials

To scan reflective materials such as photos or prints:

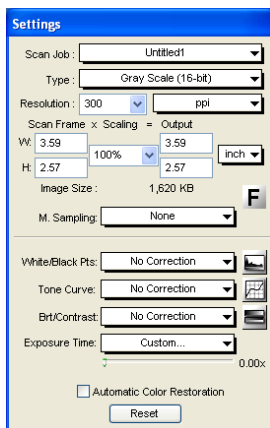
1. Raise the scanner lid.
2. Place the reflective original to be scanned face down on the scanner glass bed, towards the front of the scanner. Then, center the top of the original along the horizontal ruler of the scanner.
3. Lower the scanner lid.

Please take note that the high temperature may cause the damage to your electrophoresis gels, transparencies and reflective materials. Therefore, remember to turn off the scanner and remove the scanned materials from the scanner once you finish the scan job.

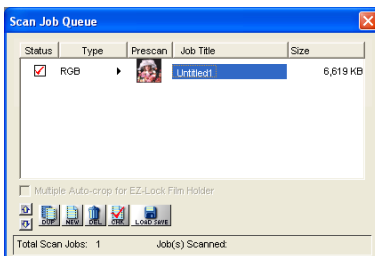


ScanWizard Bio

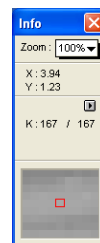
ScanWizard Bio is the scanner controller software for the Bio-5000 Plus. The four windows of ScanWizard Bio are shown here to familiarize you with the interface and to prepare you for the material in the next section on "Scanning." ScanWizard Bio can be launched as a stand-alone by clicking the program icon, or it can be launched by using the File-Import or File-Acquire command from your image-editing program.



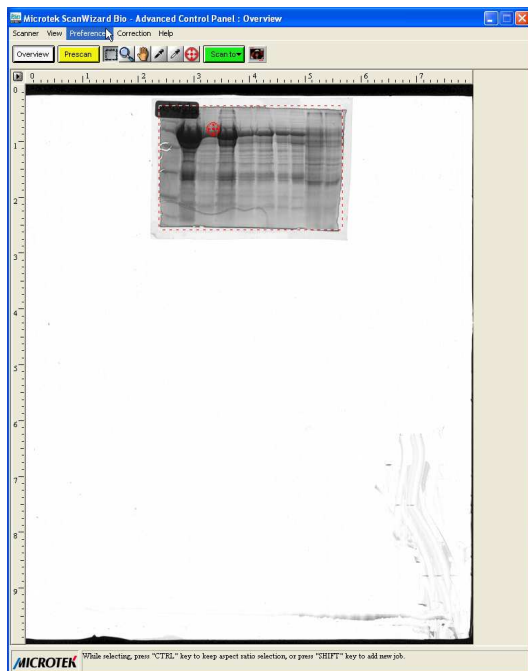
Settings window



Scan Job Queue window



Info window



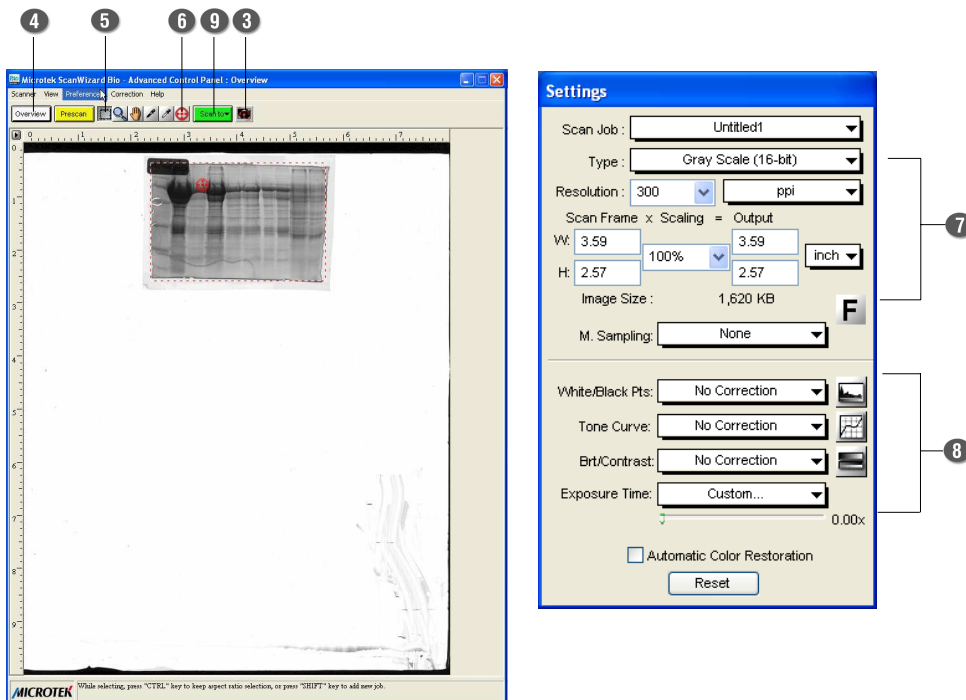
Preview window when scanning electrophoresis gels or film



Preview window when scanning photos (reflectives)

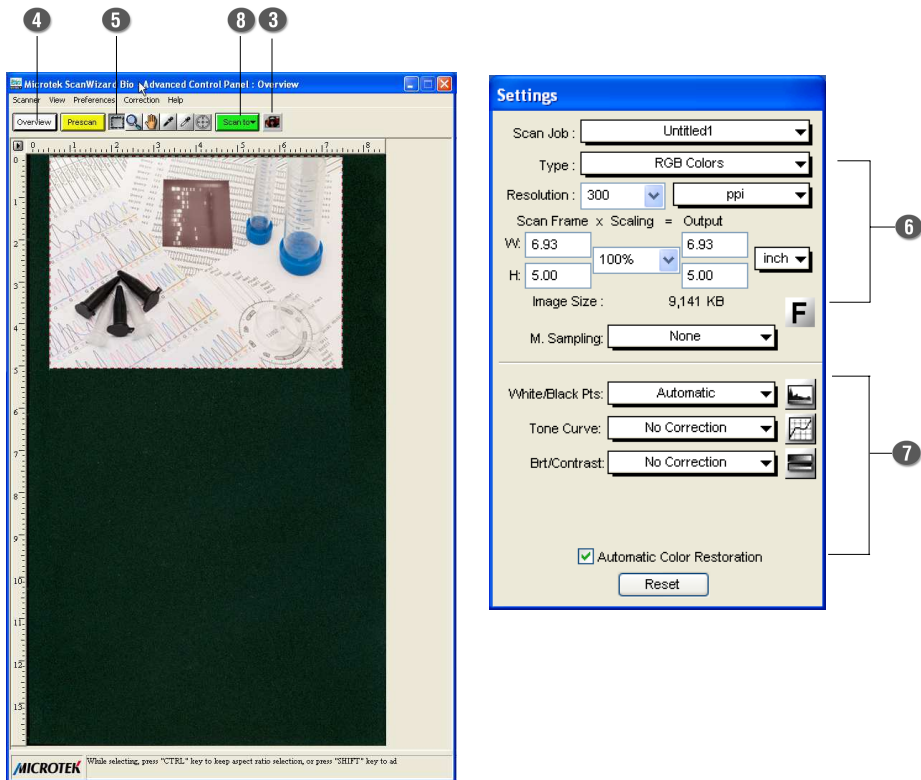
Scanning Electrophoresis Gels or Film

1. Position the Leak-Free Glass Holder with loaded gel or film on the scan bed, as detailed in the "Position Electrophoresis Gels/Film or Transparent Film" section of this guide.
2. Launch **ScanWizard Bio**.
3. In the Preview window of ScanWizard Bio, choose **Transmissive** from the Scan Material menu.
4. Click the **Overview** button in the Preview window to see a preliminary scan of the image.
5. Select the **Scan Frame** tool, and choose the area to be scanned by sizing the marquee around the targeted area.
6. Select the **Auto Focus** tool, and select the area of the scan frame to which the AF function will be applied.
7. Specify your scanning requirements in the Settings window. Choose the desired image type and resolution, and adjust the scan frame settings if necessary.
8. Adjust image quality if necessary, using the Advanced Image Correction tools.
9. Click the **Scan** (or "Scan to") button in the Preview window to start scanning. (The Scan button appears as the "Scan to" button when ScanWizard Bio is launched in stand-alone mode in Windows XP.)



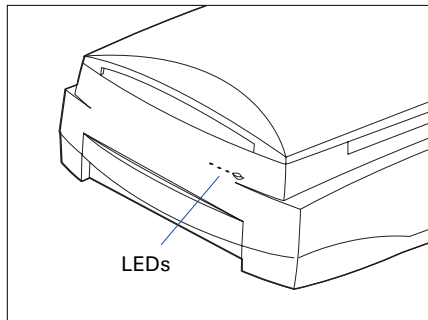
Scanning Reflective Materials (e.g., photos or prints)

1. Position the reflective original on the upper glass bed, as detailed in the "Position Reflective Materials" section of this guide.
2. Launch **ScanWizard Bio**.
3. In the Preview window of ScanWizard Bio, choose **Reflective** from the Scan Material menu.
4. Click the **Overview** button in the Preview window to see a preliminary scan of the image.
5. Select the **Scan Frame** tool, and choose the area to be scanned by sizing the marquee around the targeted area.
6. Specify your scanning requirements in the Settings window. Choose the desired image type and resolution, and adjust the scan frame settings if necessary.
7. Adjust image quality if necessary, using the Advanced Image Correction tools.
8. Click the **Scan** (or "Scan to") button in the Preview window to start scanning. (The Scan button appears as the "Scan to" button when ScanWizard Bio is launched in stand-alone mode in Windows XP.)



Problems?

The orange and green LEDs on the front of the scanner indicate the status of the scanner. On power up, you should see the following:



First, make sure that you have followed installation steps 1 through 4. If your problem is listed here, try the suggested solution.

1. No light comes on when the scanner is turned on.

Make sure your scanner is connected to your computer and plugged into a power source.

2. Add/Remove Hardware Wizard appears on your screen.

Click the "Cancel" button and close the Control Panel. Disconnect the USB cable from the back of your computer, and refer to the installation instructions in this guide.

3. When trying to scan, an error message appears on your screen that reads, "Can't Find Scanners".

Make sure your scanner is unlocked (see Step 3).

Make sure your scanner is connected to your computer and plugged into a power source (see Step 4).

Uninstall and reinstall the ScanWizard Bio software.

4. After clicking scan, a blank screen appears.

Make sure your scanner is unlocked (see Step 3).

Uninstall and reinstall the ScanWizard Bio software.

5. Having trouble scanning electrophoresis gels/film or transparent film.

Make sure you place the gel or film on the scan bed properly. Do not block the calibration area (as indicated in the "Position Electrophoresis Gels/Film or Transparent Film" section of this guide).

From the Preview window of ScanWizard Bio, choose **Transmissive** from the Scan Material menu.

Uninstall and reinstall the ScanWizard Bio software.

6. Having trouble scanning reflectives?

Make sure you place the reflective original on the scan bed properly.

From the Preview window of ScanWizard Bio, choose **Reflective** from the Scan Material menu.

Uninstall and reinstall the ScanWizard Bio software.

Do You Need Assistance?

Manuals

If you have additional questions and need further instruction or information, we provide electronic manuals for:

1. Using your Bio-5000 Plus (Supplementary information)
2. Using the ScanWizard Bio scanning software
3. Using the bundled third-party software

To access the electronic manuals: Insert the scanner's software CD/DVD into your computer's CD-ROM/DVD-ROM drive. Next, locate and click the "Manuals" option when the software installer window appears on your screen. Finally, select and click the title of the manual you wish to view.

Missing Items

If your package is missing items, please call Microtek Customer Service.

Drivers & Software Upgrades

After you finish the installation of software, if you found that the installed drivers and software cannot run your product or your computer system properly later, please go to the Microtek **Download Service** site at ww7.microtek.com.tw/service.php to download and install any updates you may require.

For additional information about Microtek products, please visit our website at www.microtek.com.