

ColorWorks® CW-C4000 Color Inkjet Label Printer



Label Printers

Commercial

A powerful and compact on-demand commercial color label printer.

Reliability you can count on — engineered by Epson for demanding applications; backed by industry-leading service and support

Exceptional image quality — crisp photo-quality images; up to 1200 dpi resolution with variable droplet sizes

Seamless integration — compatible with ZPL II, major middleware, SAP, Windows®, Mac® and Linux

Compact, robust design — dust- and water-resistant for high-duty-cycle environments; ideal for commercial use and smaller workspaces

Wi-Fi connectivity¹ (optional) — print from compatible devices²

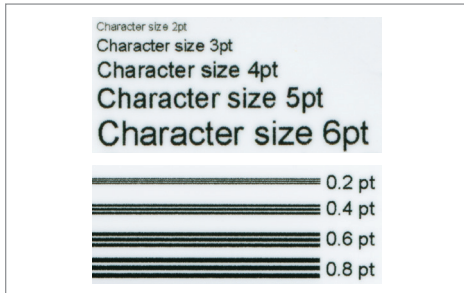
Low cost — comparable to existing thermal transfer printers³

Durable, high-quality labels — meets BS-5609 certification⁴

Remote printer management — for managing large fleets over the network

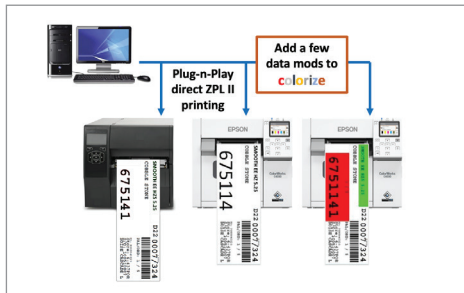
Enhanced productivity — eliminate the need to preprint; speeds up to 4" per second⁵; fast time to first label

Easy to operate — color LCD screen; automatic Nozzle Verification Technology; Windows driver; fast media and ink loading



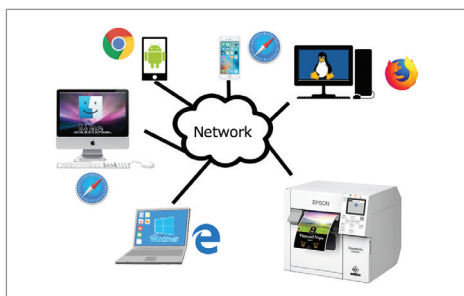
High-quality Printing

Epson-engineered PrecisionCore® TFP® printhead technology delivers ultra sharp text and precise barcodes. It also produces varying droplet sizes that, coupled with a 1200 x 1200 dpi resolution, can produce a huge gamut of vibrant, accurate colors, smooth gradations and fine image details. So, whether the challenge is to produce complex informational labels or high-quality product labels, the CW-C4000 is up to the challenge.



ESC/Label and ZPL II Interface Languages

ZPL II capabilities allow you to experience the advantages of Epson inkjet technology without reprogramming existing systems. ESC/Label command extensions can be added to unlock the power of color. Leverage color for color-coded fields, product pictures, logos and marketing messages to improve overall business processes and brand image.



Remote Management Tools

The CW-C4000 can be used in large enterprises. To support these environments, powerful remote management tools make it easy to manage a fleet of Epson printers on a network. These allow IT support teams to do mass configuration of printer settings, generate automatic alerts for items needing attention, deploy automatic firmware updates, generate reports on usage of devices and consumables, and more.

Media	Gloss Black ink SJIC41P(BK) UltraChrome	Matte Black ink SJIC41P(MK) UltraChrome
Plain paper (uncoated)	Good image	Richer image – darker black
Matte paper (coated)	Good image	Richer image – darker black
Matte synthetic (coated)	Good image, BS 5609 certified ⁴	Richer image – darker black, BS 5609 certified ⁴
Textured paper	Good image	Richer image – darker black
Wristband	Excellent image	Richer image – darker black
Gloss paper (coated)	Excellent image	Not recommended
Gloss film (coated)	Excellent image	Not recommended

Gloss or Matte Versions Available

The CW-C4000 uses highly durable pigment-based inks with gloss or matte versions available to best suit the labeling application. The gloss black ink can print on a wider variety of substrates. The matte black ink offers a darker, sharper black text and images on matte media. Both have been BS5609 certified⁴.

Printer

Print Method: Serial inkjet PrecisionCore TFP
Image Security: Nozzle Verification Technology, auto head maintenance and auto missing dot compensation
Ink Type: UltraChrome® DL pigment ink
Ink Colors: CMYK in individual cartridges
Control Panel: 2.7" full-color graphic display and 9-key pad allow for local configuration and operation
Indicators: Power, status and pause LEDs, beeper
Color Correction: ICC color profiles, RGB spot color substitution, driver-based color adjustment
Banner Printing: Supports pages sent in segments to produce large signs without gaps
Barcode Font: UPC-A, UPC-E, JAN13(EAN), JAN8(EAN), Code39, ITF, Codabar, Code93, Code128, GS1-128, GS1 DataBar Omnidirectional, GS1 DataBar Truncated, GS1 DataBar Limited, GS1 DataBar Expanded
Two-dimensional Code Printing: PDF417, QR Code, Maxi Code, GS1 DataBar Stacked, GS1 DataBar Stacked Omnidirectional, GS1 DataBar Expanded Stacked, DataMatrix, Aztec Code, MicroPDF417, Micro QR Code
Print Width: 4.25" (108 mm) max
Cutter Life (cuts):
 Paper Liner up to 1.5 M
 Synthetic Liner up to 0.5 M
 Continuous Matte Paper up to 0.5 M
 Continuous Gloss Paper up to 0.3 M
 Continuous Synthetic up to 0.1 M
Printer Durability:
 Permanent printhead - designed to last the life of the printer
 Feeding mechanism 5.9 M inches (150 km) before major service

Media

Media Sources: Internal roll-fed, rear-feed fan fold, external rear-powered unwinder
Media Construction: Standard die-cut label with or without black mark, die-cut label with matrix on and black mark, continuous tag stock with or without black mark, continuous label with or without black mark, wristband with black mark
Media Types: Plain paper, Matte paper, Synthetic label, Gloss paper, Gloss film, Wristband
Width (including liner)
 Roll: 1.0" - 4.41" (25.4 - 112mm)
 Fan fold: 2.0" - 4.41" (50.8 - 112mm)
Thickness: 0.0033" - 0.009" (0.084mm - 0.229mm)
Label Length:
 Max. 16" (406.4 mm)
 Min. 0.31" (8mm)
Internal Roll Size:
 Outer diameter: 4" (101.6 mm) max
 Inner core diameter: 1.75" - 2.25" (44 - 57 mm)
Die-cut Label Gap: 2 mm - 6 mm
Inner Core Diameter: 1.75" - 2.25" (44 - 57 mm)
Media Sensors: Gap, black mark, media cut
Die-cut Label Gap: 2 mm - 6 mm
Black Mark Size: Min. 0.51" x 0.16" (13 mm x 4 mm) (W x H)

General

Interfaces: Ethernet 1000BASE-T/100BASE-TX/10BASE-T USB 2.0
Operating System: Windows 11, 10, 8.1, Windows Server® 2019, 2016, 2012 R2 (64 bit), 2012 (64 bit), Mac OS® 10.9.5 or later, macOS® 11.x or later
Direct Command-based Printing: Zebra ZPL II native language support, plus command extensions, to allow for colorization of data; Epson ESC/Label color command language
Remote Management Tools: Epson Device Admin, WebConfig, Epson Monitoring Tool, Printer Setting Utility, Epson Deployment Tool, EpsonNet Setup Manager, EpsonNet Config SE, Epson Firmware Updater
Operating Temperature:
 41 to 95 °F, 5 to 35 °C
 20 to 80% RH humidity

General (continued)

Storage Temperature:
 -4 to 140 °F, -20 to 60 °C
 5 to 85% RH humidity
Power Consumption:
 28.2 W Printing (average printing)
 2.6 W Standby
 0.13 W Power Off State
Rated Voltage: AC 100 - 240 V AC
Rated Frequency: 50 - 60 Hz
Dimensions (W x D x H):
 Printer: 12.2" x 11.1" x 11.2" (310 mm x 283 mm x 285 mm)
 Shipping: 15.6" x 17.6" x 18.5" (396 mm x 446 mm x 469 mm)
Weight:
 Printer: 13 kg/ 28.7 lbs
 Shipping: 17.5 kg/ 38.6 lbs
Acoustic Noise: Approx. 58 dBA
EMI: FCC/ICES-003 Class A, VCCI class A, CE Marking
Safety Standards: UL1950/CSA C22.2 No.950, TUV, GOST-R
Limited Warranty: 1-year depot repair

What's in the Box

ColorWorks CW-C4000 printer, AC adapter, AC cable, USB cable, Full set of Ink Cartridges (SJC41P-C, SJC41P-M, SJC41P-Y, SJC41P-BK/MK), Maintenance box, Roll paper, Safety Standards and Approvals, Start here poster

Eco Features

RoHS compliant
 Recyclable product⁶
 Epson America, Inc. is a SmartWay® Transport Partner⁷

Ordering Information

CW-C4000 Gloss Printer	C31CK03A9991
CW-C4000 Matte Printer	C31CK03A9981
SJC41P-BK Ink Cartridge (Gloss Black)	C13T52L120
SJC41P-C Ink Cartridge (Cyan)	C13T52L220
SJC41P-M Ink Cartridge (Magenta)	C13T52L320
SJC41P-Y Ink Cartridge (Yellow)	C13T52L420
SJC41P-MK Ink Cartridge (Matte Black)	C13T52L520
SJMB4000 Maintenance Box	C33S021601
Replacement Auto-cutter Unit OT-CU40	C32C882201
Paper Exit Tray OT-PT40	C32C882101
WiFi Dongle OT-WL06-321	C32C891321

Print Mode	Resolution (dpi)	Head Passes	Print Speed (inches per second) 4" (101.6mm) print width
Max Speed	300 x 600	1	3.94 ips (100 mm/s)
Speed	600 x 600	1	2.76 ips (70 mm/s)
Normal	600 x 600	2.5	1.89 ips (48 mm/s)
Quality	600 x 1200	6	0.71 ips (18 mm/s)
Max Quality	1200 x 1200	12	0.31 ips (8 mm/s)

Print speeds are based on the print engine speed only. Total throughput time for any label depends on factors including label size, file size, print resolution, speed of data transmission and other factors.

1 With optional WiFi Dongle OT-WL06-321 (sold separately). | 2 Most features require an Internet connection to the printer, as well as an Internet- and/or email enabled device. | 3 Printers and consumable costs are similar when comparing similarly featured leading brand thermal transfer printers and supplies for similar high-durability images on similar media. | 4 ColorWorks CW-C4000 inkjet printer with UltraChrome® DL pigment ink, used in combination with Neenah Kimdura™ poly media, has been BS-5609 certified. | 5 Printing in Max Speed Mode, 300 x 600 dpi resolution, 4" (101.6 mm) print width. Print speeds are based on the print engine speed only. Total throughput time for any label depends on factors including label size, file size, print resolution, speed of data transmission, etc. | 6 For convenient and reasonable recycling options, visit www.epson.com/recycle | 7 SmartWay is an innovative partnership of the U.S. Environmental Protection Agency that reduces greenhouse gases and other air pollutants and improves fuel efficiency.

Better Products for a Better Future™
eco.epson.com



Epson America, Inc.
 3131 Katella Ave, Los Alamitos, CA 90720

Epson Canada Limited
 185 Renfrew Drive, Markham, Ontario L3R 6G3

www.epson.com
www.epson.ca

EPSON, ColorWorks, PrecisionCore and UltraChrome are registered trademarks, EPSON Exceed Your Vision is a registered logomark and Better Products for a Better Future and Epson Connect are trademarks of Seiko Epson Corporation. Mac is a trademark of Apple Inc., registered in the U.S. and other countries. Android is a trademark of Google LLC. Windows is either a registered trademark or trademark of Microsoft Corporation in the United States and/or other countries. Wi-Fi® is a registered trademark and Wi-Fi CERTIFIED™ is a trademark of Wi-Fi Alliance®. All other product and brand names are trademarks and/or registered trademarks of their respective companies. Epson disclaims any and all rights in these marks.
 Copyright 2021 Epson America, Inc. CPD-61505 12/21

Contact:

