

Office multifunctional printer of the highest quality equipped with smart solutions

N500 Series



COPY

| Model | N511 | N512 | |
|------------------------------|---|---|------------------|
| Copy Speed | 28ppm | 36ppm | |
| Wake-up time from Sleep Mode | Less than 20 sec | | |
| First-Image-Out Time (FCOT) | As fast as 5.3 sec | As fast as 4.5 sec | |
| Memory | 2GB (Max. 4GB) | | |
| HDD | 250GB | | |
| Maximum Paper Handling | 9,999 sheet | | |
| Scan speed (based on 300dpi) | Up to 45 ppm | | |
| Resolution | Scan | 600dpi X 600dpi | |
| | Output | Up to 1,800dpi X 600dpi | |
| Duplex | Standard | | |
| ADF paper loading | 130 sheet (68g/m ²) | | |
| Total capacity | 1,100 sheet (500 sheet x 2 + 100 sheet manual tray) | | |
| Paper | Tray 1 | A5 ~ B4 | |
| | Tray 2 | A5 ~ A3, 60g/m ² ~ 220g/m ² | |
| | Manual tray | A5 ~ A3, 60g/m ² ~ 220g/m ² | |
| Stacking tray | 250 sheet | | |
| Consumables | Toner | 23,000 sheet (based on the ISO 5% chart) | |
| | Drum | 100,000 sheet | 110,000 sheet |
| | Developer | 600,000 sheets | |
| Power | Max. power consumption | Less than 1,500W | |
| | Sleep mode | 0.5W | |
| Noise | In operation | Less than 68.7db | Less than 69.9db |
| | Standby | Less than 40.5db | |
| Dimension (W x D x H) | 585 x 660 x 862 mm | | |
| Weight | 56.5 kg | | |

PRINT

| Model | N511 | N512 |
|-------------|---|---|
| Print speed | 28ppm | 36ppm |
| Resolution | Scan | 600dpi X 600dpi |
| Output | Up to 1,800dpi X 600dpi | |
| PDL | PostScript 3 (3016) Emulation, PCL 6 (XL Version 3.0) Emulation, PCL 5e/c Emulation, XPS Version 1.0. | |
| OS | Server | Windows Server 2003 / Server 2003 R2 / Server 2008 Windows Server 2003 / Server 2003 R2 / Server 2008 R2 / Server 2008 R2 x64 Edition / Server 2012 / Server 2012 R2 |
| | Client | Vista / 7 / 8 / 8.1 Vista / 7 / 8 / 8.1 x64 Edition Windows Server 2003 / Server 2003 R2 / Server 2008 / Windows Server 2003 / Server 2003 R2 / Server 2008 x64 Edition / Mac OS9.2 / OS X 10.2, 10.3, 10.4 PowerPC version / OS X 10.5 PowerPC / Intel version / OS X 10.6, 10.7, 10.8, 10.9, 10.10 Intel version Red Hat Enterprise Linux |
| Driver | PCL6 | Vista / 7 / 8 / 8.1 Printer driver Windows Server 2003 / Server 2003 R2 / Server 2008 Server 2003 / Server 2003 R2 / Vista / 7 / 8 / 8.1 / Server 2008 / Server 2008 R2 / Server 2012 / Server 2012 R2 x64 Edition |
| | PS3 | Vista / 7 / 8 / 8.1 PS Windows Server 2003 / Server 2003 R2 / Server 2008 PS Server 2003 / Server 2003 R2 / Vista / 7 / 8 / 8.1 / Server 2008 / Server 2008 R2 / Server 2012 / Server 2012 x64 Macintosh OS9.2 Printer driver PPD file Macintosh OS X 10.2, 10.3, 10.4 PowerPC version PPD+PDE Printer driver Macintosh OS X 10.5 PowerPC / Intel Version PPD+PDE Printer driver Macintosh OS X 10.6, 10.7, 10.8, 10.9, 10.10 Intel Version PPD+PDE Printer driver PPD file: for Red Hat Enterprise Linux Printer driver (CUPS v1.1.22) |
| Driver | XPS | Windows Vista / 7 / 8 / 8.1 / Server 2008 XPS Driver Windows Vista / 7 / 8 / 8.1 / Server 2008 XPS / Server 2008 R2 / Server 2012 / Server 2012 R2 x64 Edition Driver |
| | | |
| Memory | 2GB | |
| Interface | Ethernet 10Base-T / 100Base-TX / 1,000Base-T USB1.1, USB2.0, USB Host | |

SCAN

| Model | N511 | N512 |
|----------------|--|---|
| Scan Mode | Auto color, full color, gray scale, black and white | |
| Resolution | Push | 200 / 300 / 400 / 600 dpi |
| | Pull | 100 / 200 / 300 / 400 / 600 dpi |
| Scan speed | Color | Up to 45ppm (A4/300dpi) |
| | Black & white | Up to 45ppm (A4/300dpi) |
| Supported size | Scanner | 297 x 431.8 mm |
| | ADF | 297 x 1,000 mm (≤400dpi) 297 x 431.8 mm (600dpi) |
| Interface | Ethernet 10Base-T / 100Base-TX / 1000Base-T | |
| Protocol | TCP / IP (FTP, SMB, SMTP, WebDAV) (IPv4 / IPv6) | |
| OS | Vista (32 / 64bit) / 7 (32 / 64bit) / 8 (32 / 64bit) | |
| Driver | TWAIN Driver, HDD TWAIN Driver | |
| Data format | TIFF, PDF, Compact PDF, JPEG, XPS, Compact XPS, PPTx, docx, xls Searchable PDF, PDF/A, Linearized PDF | |

FAX (Option)

| Model | N511 | N512 |
|-----------------------|---|---|
| Communication line | PSTN (Public Switch Telephone Network), PBX (Private Branch Exchange), G3 (Fax line) | |
| Transmission speed | 2.4kbps ~ 33.6kbps | |
| Transmission time | Less than 2 sec (A4, V.34, 33.6kbps, JBIG) | |
| Data compression type | MH, MR, MMR, JBIG | |
| Communication mode | ECM / G3 | |
| Transmission size | Scanner | 297 x 431.8 mm (A3 or WLTR) |
| | ADF | 297 x 1,000 mm (STD/Fine/Super line) 297 x 431.8 mm (Ultra line, Manual TX mode) |



More than an innovation!
An advanced multi-functional digital copier

N500 Series



※ Some images in this catalog show the product with the optional features installed.

Dawn of a new era in high-quality office MFP

A3 Mono Multi-functional Digital Copier

N500 Series

Simple and Smart

Smart printing with upgraded print quality and various finisher options. Refined printer architecture that's ideal for the office thanks to its compact space-saving design.



Supports more mobile devices

Improved mobile connectivity with smart phones and tablets. Print documents and images from your mobile device directly or save scanned data to back to your device. MFP functions can be accessed conveniently from mobile devices using dedicated apps for Android devices, or AirPrint compatibility with Apple devices.

Eco-friendly system

Power consumption can be reduced significantly by switching to the power saving mode easy and conveniently. Manage and register eco-friendly functions (e.g. double-sided printing, toner saving, and power saving) from the simple system management main menu.

Easy color control panel

Color control panel has been improved by applying innovative IWS application program. Shortcut keys can be set-up for frequently-used functions plus you can add your own user logo or customize icon designs. The new "Make-a-widget" functionality and other notifications can be added to the main menu, while the color inversion functionality has been added to assist users with weakened eyesight.

Mobile Solution & High Efficiency

Supporting mobile devices, varieties

Various easy-to-use mobile functions

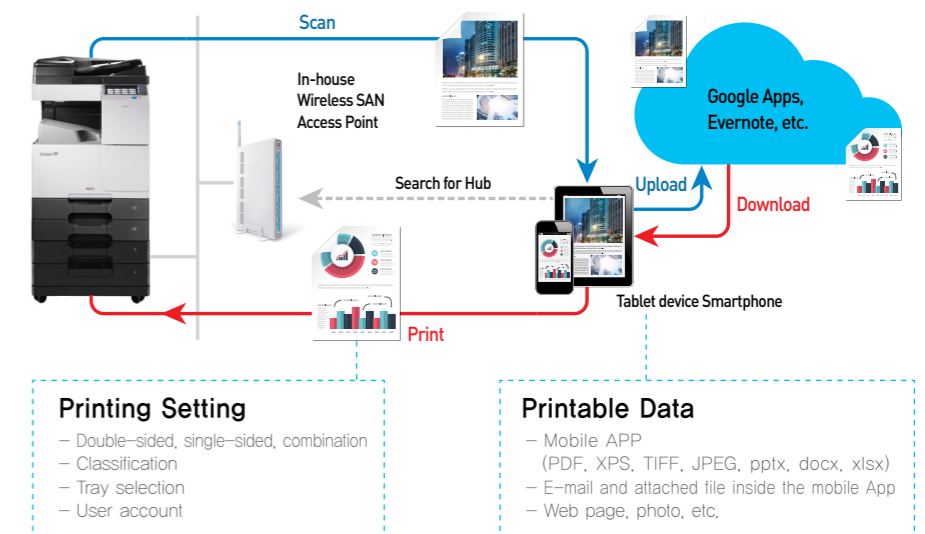
NFC functions are now available as a new mobile touch area has been installed on the OP panel. If a smart phone App is installed, mobile devices can be connected to the MFP more conveniently. What's more, camera, web, and e-mail functions are supported, making it possible to print these pages simultaneously. A scanned image can be directly saved in the mobile document box.



※ NFC : Near Field Communication

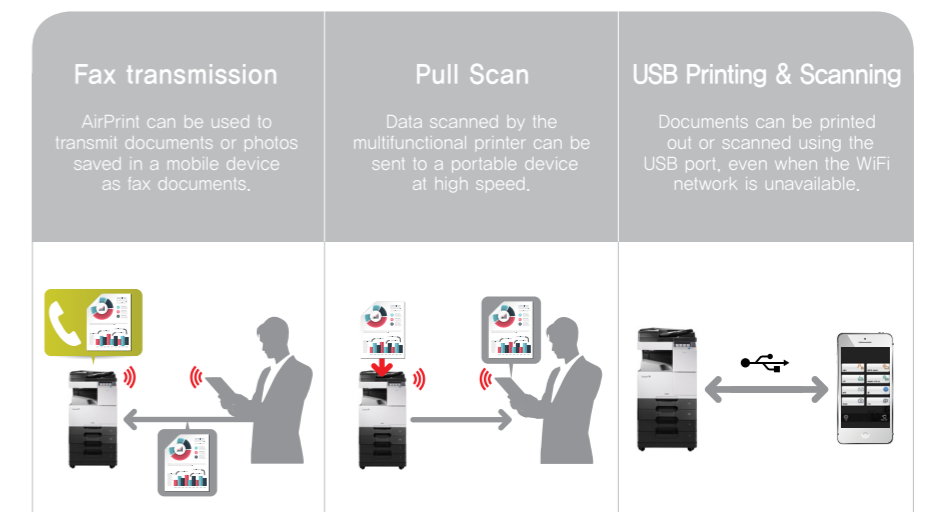
Various types of print settings and data formats

Documents and images can be set in various data formats (PDF, JPEG, PPTX, etc.) and methods (double-sided, combination, secure printing, etc.) simply by connecting to any smart phone or tablet device.



AirPrint function

The AirPrint function is supported, allowing wireless printing, faxing, and scanning by connecting to an Apple device, without the need to install additional software. If a WiFi connection is not available, scanned files can be saved through the USB port. Compatible printers can be scanned using wireless LAN.





Efficient Network System



Smart & Practical System

Practical office solution

Multiple networks

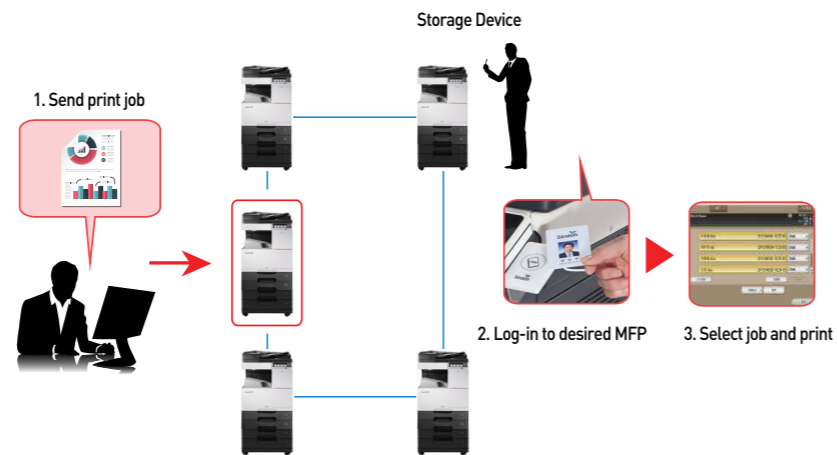
The security and convenience of the document management system can be enhanced by using two different networks in a single product. Security documents can be printed out through wired LAN, whereas mobile devices can access all the functions of the multifunctional printer easily and quickly through wireless LAN.

※ Upgrade Kit UK-212 and Local Connection Kit EK-608 are required.



Pull Printing

A target document can be directly printed out once the user has passed through a simple authentication procedure at the nearest networked multifunctional printer. This function enables the user to significantly improve efficiency by reducing the printing load of the multifunctional printer.



Simple User Interface

Optimized to the user environment

Customized UI creation by user

Users can set the OP screen as they want and process their business quickly as they can use up to 4 external shortcut keys and 5 internal shortcut keys for the most frequently-used functions. Users can also set the main screen, color and function icons to suit their individual preferences.

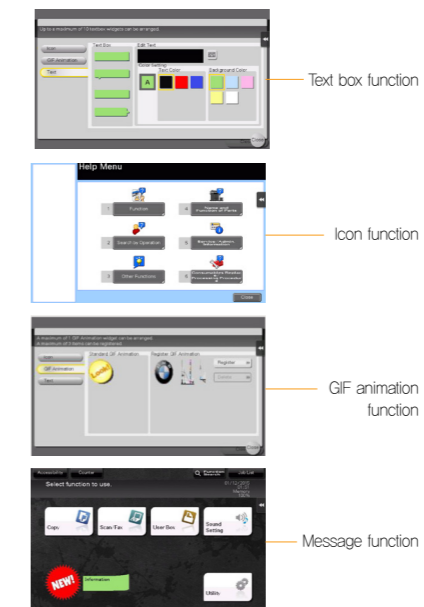


• Change icon design • Register frequently-used functions • User logo

Example of application of a customized interface

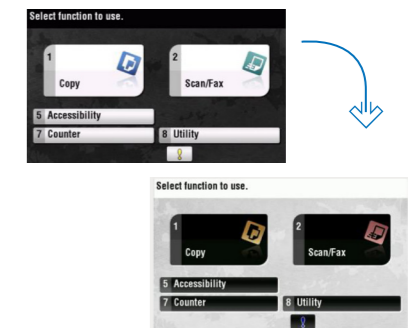
Smart widget function

A text box or an icon can be inserted into the OP as a widget. A particular function can be set in the widget, or an important meeting schedule or message can be displayed on the widget. The widget can be positioned in a specific location simply by dragging and dropping a message to that effect. The saved widget can be shared with other multifunctional printers using a USB.



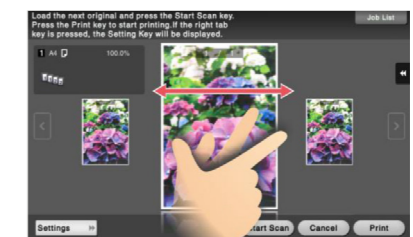
Color inversion function

High visibility is supported, as colors can be inverted while maintaining the same contrast for individuals with weak eyesight and those with color blindness.



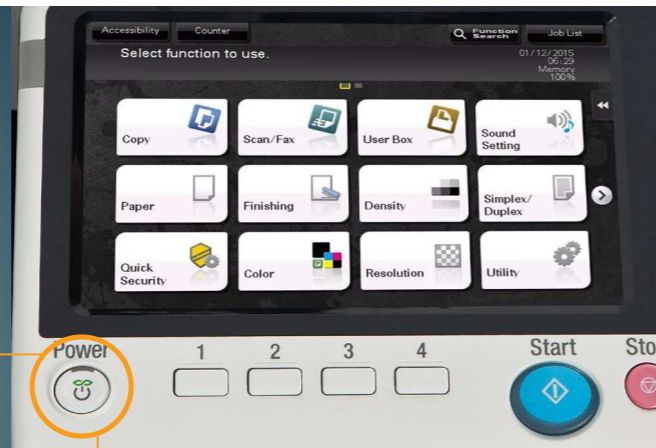
Preview & Edit

A scanned document can be edited (e.g. rotation, zooming in/out) on the OP, using the document preview function.



Eco-Friendly & Stylish

Eco-friendly system, simple design



Eco Power key

Both power management and power saving can be managed with the Eco button only.

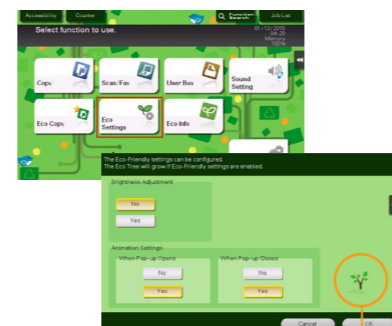
Low power consumption system

Power consumption in the sleep mode is minimized to 0.5W, by applying the CPU switch function. Switching to the sleep mode is easy and convenient using the Eco button, which also manages the power key. Press the button quickly to enter Sleep Mode, or hold down the button to enter General Mode.

N500 Ser.
0.5W

Eco-friendly data management

The Eco function can be registered in a shortcut key on the main screen. The paper-saving (integrated printing, double-sided copy) and toner-saving mode can be set easily, and the record of accumulated power consumption (every hour, every month) can be managed easily from the control panel.



If Eco is set, the Eco Tree will grow in proportion to the accumulated time.

Complete Security Solution

High security, strengthened durability

User authentication method

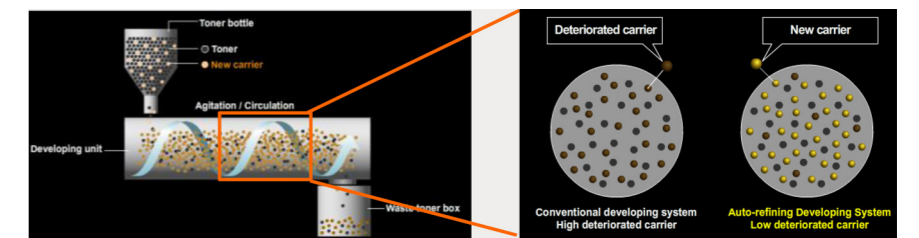


Keypad authentication

| | |
|---------------------|---|
| Security level | Normal |
| Authentication type | ID and password authentication using the multifunction printer keypad |
| Note | The individual ID and password must be entered when the internal authentication of the multifunction printer is used. |
| Additional options | None. When linked with HR Authentication module installation |
| Server | Required if linked with HR |

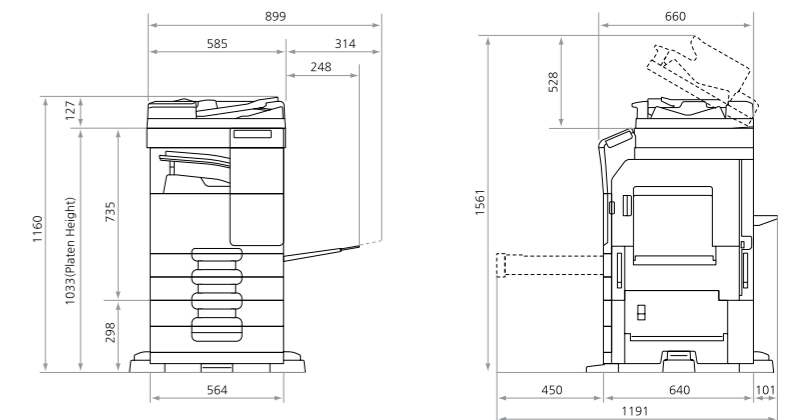
Improved printing quality

The Automatic Developer Refresh function extends the life of consumables and stabilizes printing quality. In particular, service costs can be minimized by preventing the multifunction printer from overheating during long periods of use.



Compact design

The compact design improves the use of office space significantly. In addition, the smoothly-curved, monotone product design adds a refined touch to the office environment.



Supports various finisher options

The adoption of diverse and extensive finisher options enables users to complete various printing materials to their individual preferences with ease, including staple, folding, and saddle stitching.

