



# BADGY200



## THE AFFORDABLE CARD PRINTING SOLUTION

Evolis presents the Badgy200 solution, designed to help you print professional quality color badges with perfect ease.

A complete solution which is economical and easy to use, Badgy200 fulfills all your needs for graphic personalization and instant card production, as single cards or in small batches.

### A COMPLETE SOLUTION

- This turnkey solution consists of a plastic card printer, the Evolis Badge Studio®+ card personalization software, and a pack of consumables (color ribbon and blank plastic cards) for 100 prints.
- A free card template library is available at [www.badgy.com](http://www.badgy.com), where you can personalize the template of your choice, adding texts, photos, barcodes, and more.

### EASY TO USE

- With the Badgy200 solution, you print your cards in 3 easy steps in less than a minute. The card printer is installed and used like a standard office printer and the included software is very intuitive.
- The Badgy print ribbons are easy to install and automatically recognized.

### COMPACT

- Smaller than an A4 sheet of paper, the printer can fit easily into any workspace.
- Thanks to its light weight (just 1.7 kg) and its carrying bag (sold separately), the Badgy can easily be transported.



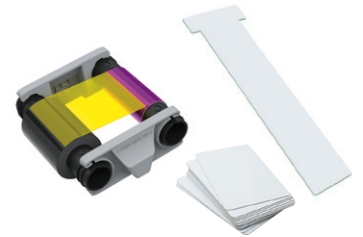
Online card template library



Evolis Badge Studio®  
card designer software



Badgy card printer



Color ribbon + PVC cards  
(53,98 x 85,60 mm)  
+ 1 cleaning card

## MAIN FEATURES / Full technical specifications on [www.evolis.com](http://www.evolis.com)

### GENERAL FEATURES

- Direct-to-card dye-sublimation/Resin thermal transfer
- Single-sided printing, edge-to-edge
- Printing resolution: 260 x 300 dpi
- 2 million colors
- 16 MB RAM

### PRINTING PERFORMANCES

- Color (YMCKO): 38 s per card (95 cards/hour)
- Monochrome: 11 s per card (325 cards/hour)

### INTERFACES

- USB 2.0 (1.1 and 3.0 compatible), cable supplied

### CARD MANAGEMENT AND SPECIFICATIONS

- Feeder capacity: 25 cards (0.76 mm – 30 mil) to 40 cards (0.50 mm – 20 mil)
- Output hopper capacity: 25 cards (0.76 mm – 30 mil) to 40 cards (0.50 mm – 20 mil)
- Card thickness: 0.50 to 0.76 mm (20 to 30 mil), automatic gauge
- Card type: PVC cards
- Card format: ISO CR-80 – ISO 7810 (53.98 x 85.60 mm)

### DISPLAY

- LEDs
- Graphic printer notifications<sup>1</sup>: cleaning alerts, end of ribbon alert, ribbon due to end, etc.

### SAFETY

- Space for Kensington® security lock

### BADGY RIBBONS

To maximize the quality and durability of the printed cards, the lifespan of the print head, and the overall printer reliability, use the Badgy ribbons.

- Ribbon capacity:
  - YMCKO (included): 100 prints/roll
  - Black monochrome ribbon: 500 prints/roll
- Automatic detection and configuration
- Ribbon in a cartridge for easier handling
- Integrated ribbon saving for monochrome printing

### SOFTWARE

- Supplied with Evolis Badge Studio® + for designing and printing badges:
  - Import data from a database
  - Windows® 7 and higher and Mac OS® X from 10.12 and higher
- Supplied with Badgy Premium Suite® for Windows®:
  - Driver
  - Printer management and configuration tool with graphic notifications<sup>1</sup>
  - 24/7 online support
  - Compatible with Windows® 7 and higher
- Supplied with the Mac OS® X driver (10.12 and higher)

### PACKAGING CONTENT

- Printer
- Consumables:
  - Color ribbon (YMCKO): 100 prints
  - 100 blank PVC cards (0.76 mm - 30 mil)
  - 1 cleaning card
- Installation USB key (print driver, Evolis Badge Studio® + software, and card templates)
- USB cable
- Power supply unit and cable

### ECO-FRIENDLY DESIGN, CERTIFICATIONS AND STATEMENT OF COMPLIANCE

- Prolonged standby mode and reduced electricity consumption
- CE, FCC, ICES, VCCI, CCC, KC, BIS
- RoHS

### SIZE AND WEIGHT

- Complete packaged solution:
  - Dimensions (H x W x D): 315 x 385 x 285 mm (12.40" x 15.15" x 11.22")
  - Weight: 3.95 kg (8.71 lbs)
- Printer:
  - Dimensions (H x W x D): 148 x 200 x 276 mm (5.83" x 7.87" x 10.87")
  - Weight: 1.665 kg (3.67 lbs)

### WARRANTY

- 2-years warranty (printer and print head)<sup>2</sup>
- Warranty extensions available as an option

<sup>1</sup> Depends on the Windows® version  
<sup>2</sup> The costs of return remain the responsibility of customer



### EUROPE - MIDDLE-EAST - AFRICA

Evolis - 14 avenue de la Fontaine - ZI Angers-Beaucouzé - 49070 Beaucouzé - France  
T +33 (0) 241 367 606 - F +33 (0) 241 367 612 - [info@evolis.com](mailto:info@evolis.com)

**US & CANADA** - Boston - [evolisnortham@evolis.com](mailto:evolisnortham@evolis.com)

**LATIN AMERICA** - Miami - [evolislatam@evolis.com](mailto:evolislatam@evolis.com)

**ASIA-PACIFIC** - Singapore - [evolisasia@evolis.com](mailto:evolisasia@evolis.com)

**CHINA** - Shanghai - [evolischina@evolis.com](mailto:evolischina@evolis.com)

**INDIA** - Mumbai - [evolisindia@evolis.com](mailto:evolisindia@evolis.com)

[www.evolis.com](http://www.evolis.com)