

Office multifunctional printer of the highest quality equipped with smart solutions

# N500 Series



## COPY

Model	N511	N512	
Copy Speed	28ppm	36ppm	
Wake-up time from Sleep Mode	Less than 20 sec		
First-Image-Out Time (FCOT)	As fast as 5.3 sec	As fast as 4.5 sec	
Memory	2GB (Max. 4GB)		
HDD	250GB		
Maximum Paper Handling	9,999 sheet		
Scan speed (based on 300dpi)	Up to 45 ppm		
Resolution	Scan	600dpi X 600dpi	
	Output	Up to 1,800dpi X 600dpi	
Duplex	Standard		
ADF paper loading	130 sheet (68g/m <sup>2</sup> )		
Total capacity	1,100 sheet (500 sheet x 2 + 100 sheet manual tray)		
Paper	Tray 1	A5 ~ B4	
	Tray 2	A5 ~ A3, 60g/m <sup>2</sup> ~ 220g/m <sup>2</sup>	
	Manual tray	A5 ~ A3, 60g/m <sup>2</sup> ~ 220g/m <sup>2</sup>	
Stacking tray	250 sheet		
Consumables	Toner	23,000 sheet (based on the ISO 5% chart)	
	Drum	100,000 sheet	110,000 sheet
	Developer	600,000 sheets	
Power	Max. power consumption	Less than 1,500W	
	Sleep mode	0.5W	
Noise	In operation	Less than 68.7db	Less than 69.9db
	Standby	Less than 40.5db	
Dimension (W x D x H)	585 x 660 x 862 mm		
Weight	56.5 kg		

## PRINT

Model	N511	N512
Print speed	28ppm	36ppm
Resolution	Scan	600dpi X 600dpi
	Output	Up to 1,800dpi X 600dpi
PDL	PostScript 3 (3016) Emulation, PCL 6 (XL Version 3.0) Emulation, PCL 5e/c Emulation, XPS Version 1.0.	
OS	Server	Windows Server 2003 / Server 2003 R2 / Server 2008 Windows Server 2003 / Server 2003 R2 / Server 2008 R2 / Server 2008 R2 x64 Edition / Server 2012 / Server 2012 R2
	Client	Vista / 7 / 8 / 8.1 Vista / 7 / 8 / 8.1 x64 Edition Windows Server 2003 / Server 2003 R2 / Server 2008 / Windows Server 2003 / Server 2003 R2 / Server 2008 x64 Edition / Mac OS9.2 / OS X 10.2, 10.3, 10.4 PowerPC version / OS X 10.5 PowerPC / Intel version / OS X 10.6, 10.7, 10.8, 10.9, 10.10 Intel version Red Hat Enterprise Linux
Driver	PCL6	Vista / 7 / 8 / 8.1 Printer driver Windows Server 2003 / Server 2003 R2 / Server 2008 Server 2003 / Server 2003 R2 / Vista / 7 / 8 / 8.1 / Server 2008 / Server 2008 R2 / Server 2012 / Server 2012 R2 x64 Edition
	PS3	Vista / 7 / 8 / 8.1 PS Windows Server 2003 / Server 2003 R2 / Server 2008 PS Server 2003 / Server 2003 R2 / Vista / 7 / 8 / 8.1 / Server 2008 / Server 2008 R2 / Server 2012 / Server 2012 x64 Macintosh OS9.2 Printer driver PPD file Macintosh OS X 10.2, 10.3, 10.4 PowerPC version PPD+PDE Printer driver Macintosh OS X 10.5 PowerPC / Intel Version PPD+PDE Printer driver Macintosh OS X 10.6, 10.7, 10.8, 10.9, 10.10 Intel Version PPD+PDE Printer driver PPD file: for Red Hat Enterprise Linux Printer driver (CUPS v1.1.22)
Driver	XPS	Windows Vista / 7 / 8 / 8.1 / Server 2008 XPS Driver Windows Vista / 7 / 8 / 8.1 / Server 2008 XPS / Server 2008 R2 / Server 2012 / Server 2012 R2 x64 Edition Driver
Memory	2GB	
Interface	Ethernet 10Base-T / 100Base-TX / 1,000Base-T USB1.1, USB2.0, USB Host	

## SCAN

Model	N511	N512
Scan Mode	Auto color, full color, gray scale, black and white	
Resolution	Push	200 / 300 / 400 / 600 dpi
	Pull	100 / 200 / 300 / 400 / 600 dpi
Scan speed	Color	Up to 45ppm (A4/300dpi)
	Black & white	Up to 45ppm (A4/300dpi)
Supported size	Scanner	297 x 431.8 mm
	ADF	297 x 1,000 mm ( ≤400dpi ) 297 x 431.8 mm ( 600dpi )
Interface	Ethernet 10Base-T / 100Base-TX / 1000Base-T	
Protocol	TCP / IP ( FTP, SMB, SMTP, WebDAV ) ( IPv4 / IPv6 )	
OS	Vista ( 32 / 64bit ) / 7 ( 32 / 64bit ) / 8 ( 32 / 64bit )	
Driver	TWAIN Driver, HDD TWAIN Driver	
Data format	TIFF, PDF, Compact PDF, JPEG, XPS, Compact XPS, PPTx, docx, xls Searchable PDF, PDF/A, Linearized PDF	

## FAX (Option)

Model	N511	N512
Communication line	PSTN ( Public Switch Telephone Network ), PBX ( Private Branch Exchange ), G3 ( Fax line )	
Transmission speed	2.4kbps ~ 33.6kbps	
Transmission time	Less than 2 sec (A4, V.34, 33.6kbps, JBIG)	
Data compression type	MH, MR, MMR, JBIG	
Communication mode	ECM / G3	
Transmission size	Scanner	297 x 431.8 mm ( A3 or WLTR )
	ADF	297 x 1,000 mm ( STD/Fine/Super line ) 297 x 431.8 mm ( Ultra line, Manual TX mode )



More than an innovation!  
An advanced multi-functional digital copier

# N500 Series



※ Some images in this catalog show the product with the optional features installed.

Dawn of a new era in high-quality office MFP

## A3 Mono Multi-functional Digital Copier

# N500 Series

### Simple and Smart

Smart printing with upgraded print quality and various finisher options. Refined printer architecture that's ideal for the office thanks to its compact space-saving design.



### Supports more mobile devices

Improved mobile connectivity with smart phones and tablets. Print documents and images from your mobile device directly or save scanned data to back to your device. MFP functions can be accessed conveniently from mobile devices using dedicated apps for Android devices, or AirPrint compatibility with Apple devices.

### Eco-friendly system

Power consumption can be reduced significantly by switching to the power saving mode easy and conveniently. Manage and register eco-friendly functions (e.g. double-sided printing, toner saving, and power saving) from the simple system management main menu.

### Easy color control panel

Color control panel has been improved by applying innovative IWS application program. Shortcut keys can be set-up for frequently-used functions plus you can add your own user logo or customize icon designs. The new "Make-a-widget" functionality and other notifications can be added to the main menu, while the color inversion functionality has been added to assist users with weakened eyesight.

## Mobile Solution & High Efficiency

Supporting mobile devices, varieties

### Various easy-to-use mobile functions

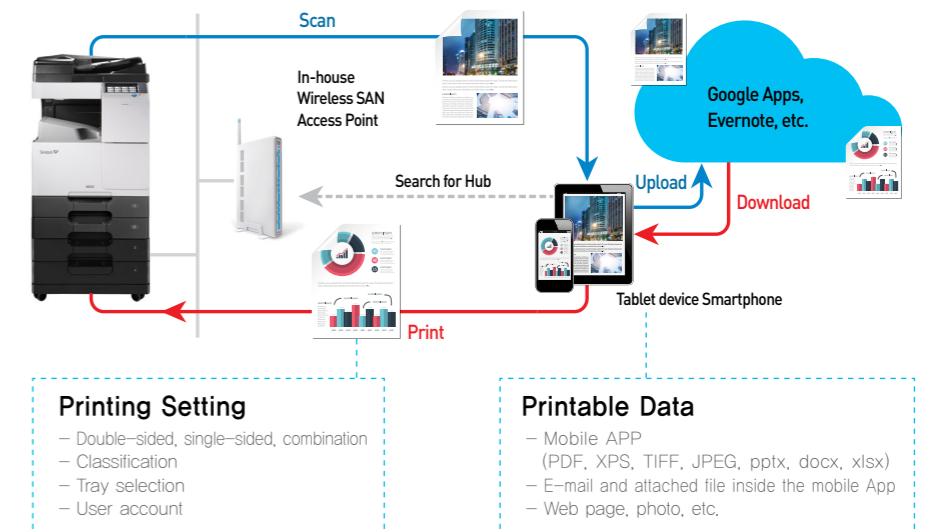
NFC functions are now available as a new mobile touch area has been installed on the OP panel. If a smart phone App is installed, mobile devices can be connected to the MFP more conveniently. What's more, camera, web, and e-mail functions are supported, making it possible to print these pages simultaneously. A scanned image can be directly saved in the mobile document box.



※ NFC : Near Field Communication

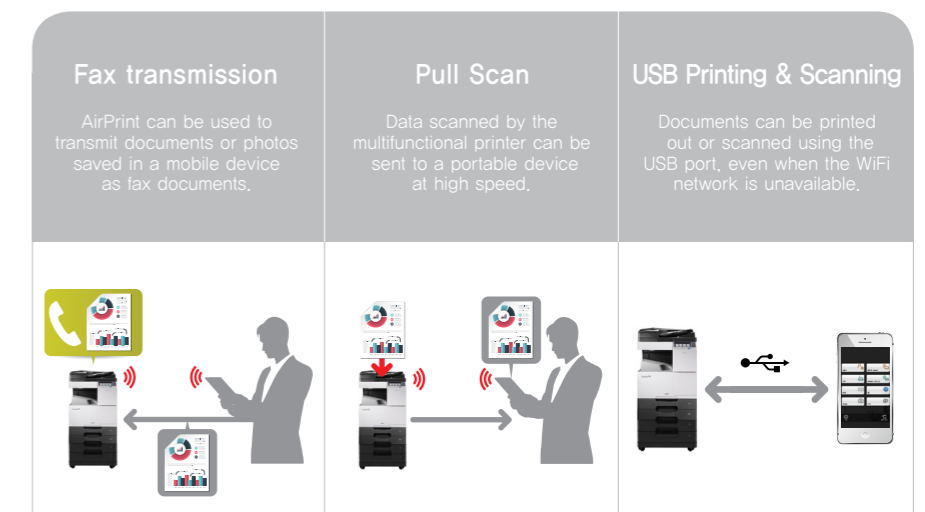
### Various types of print settings and data formats

Documents and images can be set in various data formats (PDF, JPEG, PPTX, etc.) and methods (double-sided, combination, secure printing, etc.) simply by connecting to any smart phone or tablet device.



### AirPrint function

The AirPrint function is supported, allowing wireless printing, faxing, and scanning by connecting to an Apple device, without the need to install additional software. If a WiFi connection is not available, scanned files can be saved through the USB port. Compatible printers can be scanned using wireless LAN.





## Efficient Network System



## Smart & Practical System

Practical office solution

### Multiple networks

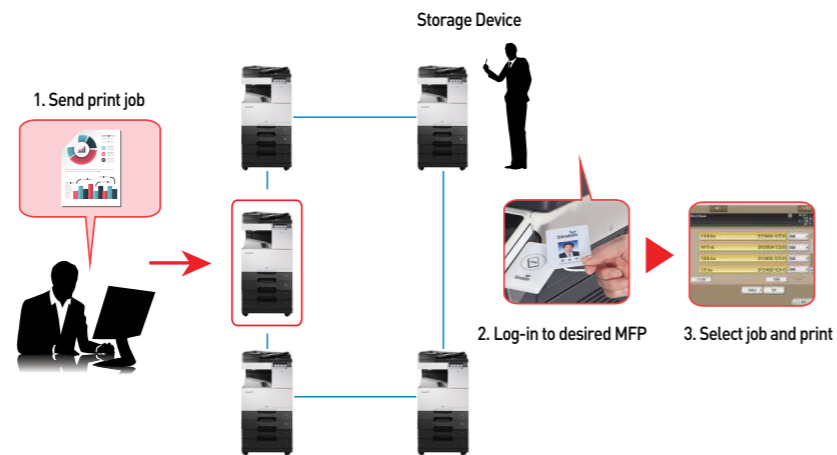
The security and convenience of the document management system can be enhanced by using two different networks in a single product. Security documents can be printed out through wired LAN, whereas mobile devices can access all the functions of the multifunctional printer easily and quickly through wireless LAN.

※ Upgrade Kit UK-212 and Local Connection Kit EK-608 are required.



### Pull Printing

A target document can be directly printed out once the user has passed through a simple authentication procedure at the nearest networked multifunctional printer. This function enables the user to significantly improve efficiency by reducing the printing load of the multifunctional printer.



## Simple User Interface

Optimized to the user environment

### Customized UI creation by user

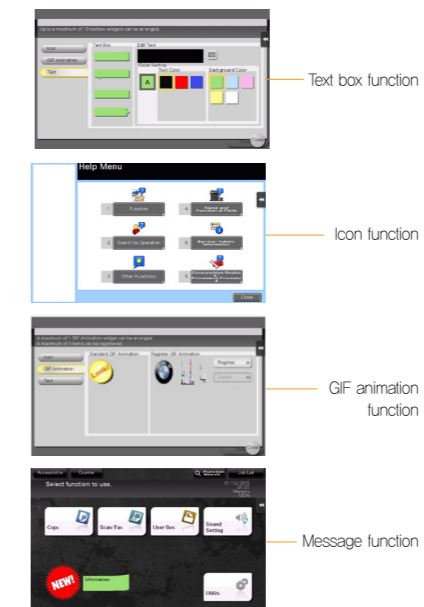
Users can set the OP screen as they want and process their business quickly as they can use up to 4 external shortcut keys and 5 internal shortcut keys for the most frequently-used functions. Users can also set the main screen, color and function icons to suit their individual preferences.



Example of application of a customized interface

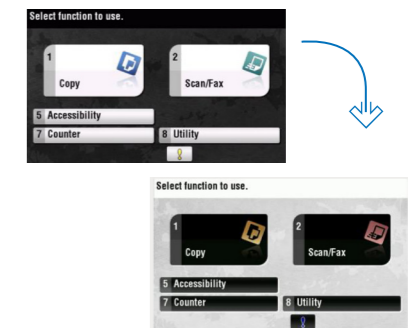
### Smart widget function

A text box or an icon can be inserted into the OP as a widget. A particular function can be set in the widget, or an important meeting schedule or message can be displayed on the widget. The widget can be positioned in a specific location simply by dragging and dropping a message to that effect. The saved widget can be shared with other multifunctional printers using a USB.



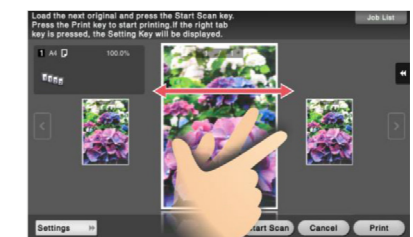
### Color inversion function

High visibility is supported, as colors can be inverted while maintaining the same contrast for individuals with weak eyesight and those with color blindness.



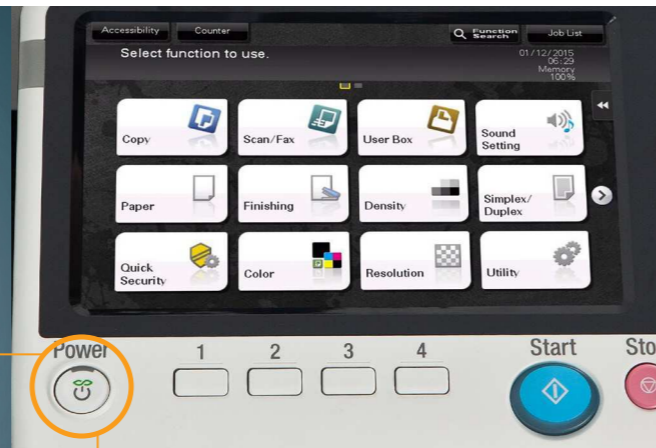
### Preview & Edit

A scanned document can be edited (e.g. rotation, zooming in/out) on the OP, using the document preview function.



# Eco-Friendly & Stylish

Eco-friendly system, simple design



## Eco Power key

Both power management and power saving can be managed with the Eco button only.

## Low power consumption system

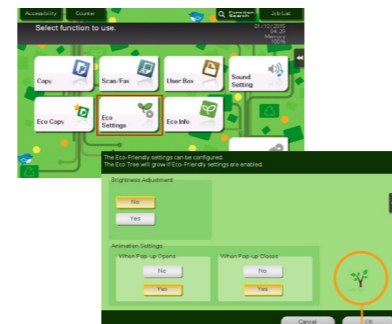
Power consumption in the sleep mode is minimized to 0.5W, by applying the CPU switch function. Switching to the sleep mode is easy and convenient using the Eco button, which also manages the power key. Press the button quickly to enter Sleep Mode, or hold down the button to enter General Mode.

**N500 Ser.**

**0.5W**

## Eco-friendly data management

The Eco function can be registered in a shortcut key on the main screen. The paper-saving (integrated printing, double-sided copy) and toner-saving mode can be set easily, and the record of accumulated power consumption (every hour, every month) can be managed easily from the control panel.



If Eco is set, the Eco Tree will grow in proportion to the accumulated time.

# Complete Security Solution

High security, strengthened durability

## User authentication method

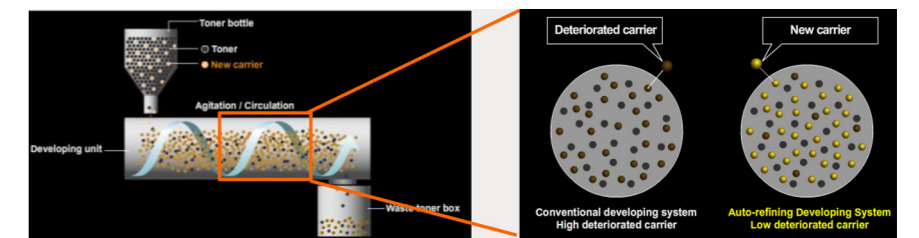


## Keypad authentication

Security level	Normal
Authentication type	ID and password authentication using the multifunction printer keypad
Note	The individual ID and password must be entered when the internal authentication of the multifunction printer is used.
Additional options	None. When linked with HR Authentication module installation
Server	Required if linked with HR

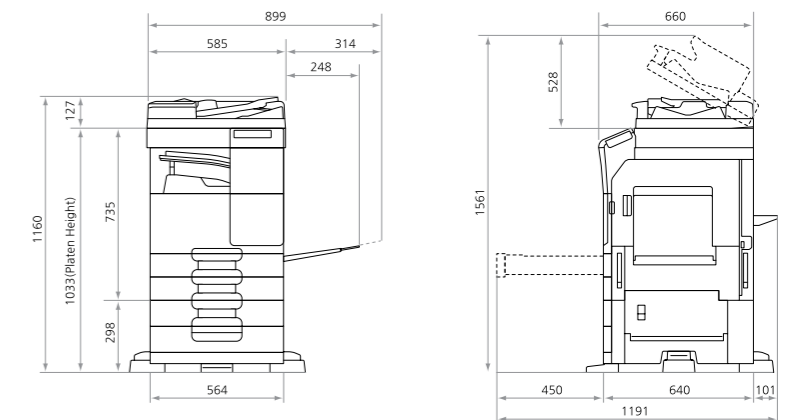
## Improved printing quality

The Automatic Developer Refresh function extends the life of consumables and stabilizes printing quality. In particular, service costs can be minimized by preventing the multifunction printer from overheating during long periods of use.



## Compact design

The compact design improves the use of office space significantly. In addition, the smoothly-curved, monotone product design adds a refined touch to the office environment.



## Supports various finisher options

The adoption of diverse and extensive finisher options enables users to complete various printing materials to their individual preferences with ease, including staple, folding, and saddle stitching.

